

Wednesday 15th May 2024

Capacity Market Information Session

2028/2029

T-4 Capacity Auction



Disclaimer

Whilst every effort is made to provide information that is useful and care has been taken in the preparation of the information, EirGrid and SONI give no warranties or representations, expressed or implied, of any kind, with respect to the contents of this document, including without limitation, its quality, accuracy and completeness.

Prior to taking business decisions, interested parties should not rely on the data set out in this document as a substitute for obtaining separate and independent advice in relation to the matters covered by this document. Information in this document does not amount to a recommendation or advice in respect of any possible investment. The use of information contained within this document for any form of decision making is done at the user's own risk. This should be read in conjunction with the Capacity Market Code.

EirGrid and SONI and their respective advisers, consultants and other contributors to this document (or their respective associated companies, businesses, partners, directors, officers or employees) hereby exclude to the fullest extent permitted by law, all and any liability for any errors, omissions, defects or misrepresentations in the information contained in this document, or for any loss or damage suffered by persons who use or rely on such information (including by reason of negligence, negligent misstatement or otherwise).



Agenda

Introduction - Marc Curran

Upcoming Key Dates - Shelley Van den Berg

Initial Auction Information Pack - Shelley Van den Berg

Where to find the Forms? - Shelley Van den Berg

- Qualification
- Exceptions

Breakdown of Qualification Forms - Shelley Van den Berg

- New & Existing Parties

Qualification for New Capacity - Marc Curran

- Implementation Plans for New Capacity
- CRU Direction
- Annual Run Hours

Qualification Guidelines - Shelley Van den Berg

Form Checks - reoccurring corrections - Shelley Van den Berg

Capacity Market Platform (CMP) - Shelley Van den Berg

Q&A - Marc Curran



Introduction

Please see Capacity Market page on the [SEMO website](#) for Capacity Market information and additional resources

Capacity Market

The Capacity Market is a mechanism to ensure that the electricity supply in Ireland and Northern Ireland continues to meet demand.

The Capacity Market is designed to help ensure that the generation capacity in Ireland and Northern Ireland (including Storage, Demand Side Units and Interconnector capacity) is sufficient to meet demand and that the regulatory approved generation adequacy standard is satisfied. It is a competitive auction-based design where the most efficient and lowest cost capacity is most likely to be successful. This design helps to promote the short-term and long term interests of consumers of electricity across Ireland and Northern Ireland with respect to price, quality, reliability and security of supply of electricity.

Only those units who are successful in the capacity auctions will receive capacity payments. Capacity providers that are successful in the capacity auction will be paid regular payments during the year for each MW of capacity they successfully sold to the market in the Auction. In return, capacity providers that have been successful in the Auction are required to deliver on their Capacity Market obligations. These include making available the awarded capacity and providing sufficient energy to satisfy their awarded capacity through participation in the day-ahead, intraday and balancing market and paying difference charges where the energy price exceeds the strike price. It should be noted that generators and other units operating in the Single Electricity Market (SEM) can also earn revenue from the energy market and system services.

How It Works

Information – Timetables and Auction Packs	+
Qualification – Who can participate in the Capacity Market?	+
Qualification – What is required to qualify?	+
Qualification – De-rating, Capacity Requirement and Locational Capacity Constraints	+
Capacity Auction	+
Delivery and Settlement	+

[Join the market >](#)



Key Dates

Capacity Auction Timetable [2028/2029 T-4 Capacity Auction](#)

- Qualification Application Date - 4th June 2024
- Provisional Qualification Results - 31st July 2024
- Final Qualification Results Date - 7th November 2024
- Auction Run Date - 28th November 2024 10am
- Provisional Auction Results Date - 3rd December 2024
- Capacity Auction Provisional Results Publication Date - 10th December 2024
- Final Auction Results Date - 17th December 2024



Initial Auction Information Pack

Initial Auction Information Pack for 2028/2029 T-4 Capacity Auction:

The IAIPs contain information on:

- De-Rating Curves
- Capacity Requirements
 - The Final Demand Curve will be included in the Final Auction Info Pack on 7th November 2024
 - Final Demand Curve based on the Capacity Requirement modified by the RAs to include other adjustments.
- Locational Capacity Constraints
 - The Required Quantities will be included in the FAIP on 7th November 2024
- Price Caps and New Capacity Investment Rate Threshold
- Termination Charges, Performance Security Rates, and Stop-Loss Factors
- Capacity Auction Timetable



Where to find the Forms?

[C31,C32 Capacity Market Qualification Data Guide Read Me tab \(v1.25\)](#)

[C01,C02, C11 Capacity Market Party and Unit Registration \(v1.25\)](#)

[C31,C32a Capacity Market Qualification Data CU\(v1.25\)](#)

[C31,C32b Capacity Market Qualification Data CCU\(v1.25\)](#)

[C31,C32c Capacity Market Qualification Data AGU\(v1.25\)](#)

[C31,C32d Capacity Market Qualification Data APS\(v1.25\)](#)

[C33 Capacity Market Opt Out Notification-\(v1.25\)](#)

[C34-Opt-In-Notification-v1.25](#)

[C03-Capacity-Market-Party-Administrative-User-\(PAU\)-Cancellation-v1.25](#)

[R2C2 - Gas Turbine Information Consent Form](#)



Exceptions Process

- All applications for exceptions should be sent directly to the RAs by 4th June 2024 for;
 - Unit Specific Price Caps (USPCs)
 - Maximum Capacity Duration > 1 year
- Application forms for exceptions can be located on the SEM Committee website
- Information on submitting Exception Applications to the RAs can be found in section E.5 of the Capacity Market Code and any subsequent Exception applications must be sent to CRMsubmissions@uregni.gov.uk.

Breakdown of Qualification Forms

Please note, if your Party is Registered in the Balancing Market and you have received a PY ID, PT ID and Unit ID for this Party, then these details should be used across all Markets, including the Capacity Market.

New Parties

Register
your Party



C01, C02, C03
& C11 Pack



C01 - Party Application Form - Mandatory



C02 - Party Administrative User (PAU) - Mandatory



C03 - Party Administrative User (PAU) Cancellation - Mandatory



C11 - Unit Participation Notice - Mandatory

For the 2028/2029 T-4 Capacity Auction, Participants intending to submit Applications for Qualification for new units that do not have a CMU or GU ID, please submit the above forms as early as possible.

These forms can be submitted with the Application for Qualification; however, it will assist with the qualification process if new units are registered prior to submission of the Application for Qualification. The forms included in this pack are to be completed by a new Party or new Unit registering in the Capacity Market.

Parties that participated in a previous Capacity Auction do not need to complete a C01 form but will be required to complete a C11 form for any new Units registering. If a Unit participated in a previous Capacity Auction, then this pack is not required.



Breakdown of Qualification Forms

Please note, if your Party is Registered in the Balancing Market and you have received a PY ID, PT ID and Unit ID for this Party, then these details should be used across all Markets, including the Capacity Market.

Existing Party

Qualify the Unit(s)

- ➔ C31, C32a - Qualification Data - for Individual Units
- ➔ C31, C32b - Qualification Data - for combined Candidate Unit
- ➔ C31, C32c - Qualification Data - for Aggregator Generator Unit
- ➔ C31, C32d - Qualification Data - for Autoproducer Unit

C11 - Unit Participation Notice - Mandatory.

C02 - Party Administrative user (PAU) Authorisation - Mandatory

C03 - Party Administrative user (PAU) Cancellation - Mandatory

New or Existing Capacity?
A Unit is classified as Existing if it is commissioned under the relevant Grid Code, e.g. has an FON or MRC to the value applied for.

Information for New Capacity seeking to qualify



Implementation Plan for New Capacity

An Implementation Plan must be completed for each Candidate Unit seeking to qualify New Capacity in the current Capacity Action - Capacity Market Code Section E.7.5.

Implementation Plan forms are located within the Qualification Packs which can be downloaded from the SEMO website.

Please refer to Section J.2 of the Capacity Market Code for details of required Implementation Plan content.

Please provide as much detail as possible in project description (i.e site coordinates, primary, secondary fuel types, run hour limitations, etc).

Supporting documentation can be submitted alongside your Application for Qualification.



CRU Direction (CRU202437)

The CRU have directed EirGrid, the TSO in Ireland to issue a grid connection offer to successful participants the Ireland Locational Capacity Constraint Area in the 2028/29 T-4 Capacity Auction.

If this applies to you, as set out in the CRU letter, we will require the following evidence;

- Land owner consent
- Evidence of submission of a completed planning application

Please submit by the 9th October 2024 or earlier as available and ideally with your Application for Qualification.

Participants seeking to get a Connection Offer through the CRU Direction, should indicate their preferred connection point in their application.

Questions in respect of the connection process should be directed to info@eirgrid.com. Please see [FAQ](#).



R2C2 - Gas Turbine Information Consent Form

All new gas turbine capacity should complete the R2C2 form, which provides GNI/Mutual Energy with the relevant information needed to assess their application.

The consent form allows EirGrid/SONI to share and discuss the unit's project information with GNI/Mutual Energy

R2C2 forms are available on the SEMO website alongside Application for Qualification

Please note that if the appropriate consents are not submitted with qualification forms, it may affect the qualification assessment of the applicants' units



Annual Run-Hour Limits

The above limits apply to New Generation Units which generates using combustion.

Initial ARHL limit	Gas Turbine	Steam Turbine	Other
<500 hours	0.17	0.17	1
>500<=1500 hours	0.43	0.43	1
>1500 hours	1	1	1

Example: a 100 MW new Gas unit that is limited to running above 500 hours per year but less than 1500 hours per year, then it would have the following De-Rated Capacity:

$$\text{Initial Capacity} * \text{IAIP Marginal De-rating factor} * \text{ARHL de-rating factor}$$

- $= 100 \text{ MW} * 0.855 * 0.43 = 36.765 \text{ MW De-Rated Capacity}$



Annual Run-Hour Limits

Example 1

Gas turbine is located on a site, where the site (not the gas turbine) is subject to noise limits between the hours of 23:00 and 07:00 and where running the gas turbine between the hours of 23:00 and 07:00 would exceed these noise limits.

The gas turbine is effectively limited by the environmental licence of the site to not run between the hours of 23:00 and 07:00. This gas turbine can therefore only run at its Initial Capacity for 5840 hours per year due to environmental limits.

Example 2

A Demand Side Unit is associated with a Demand Site that provides demand reduction using on-site back-up generation and that on-site back up generation is limited to <500 hours per year.

The Demand Side Unit is effectively limited by the environmental licence of the associated Demand Site. This DSU can therefore only run at its Initial Capacity for <500 hours per year.



Annual Run-Hour Limits

Although ARHL de-rating factors do not apply to existing generator units, existing generator units should still state their annual run hours in the application forms

Supporting Documents	Relevance	Submission Format	Complete
Emissions calculations for the purposes of assessing compliance with CO2 Limits.	Required	PDF document emailed to SEMO	<input type="checkbox"/>
Other environmental limits	Required where Duration in hours (Annual) is less than 8760 hours	PDF document emailed to SEMO	<input type="checkbox"/>

Two additional tick boxes in the 'Confirmation and Signature' tab in CU forms



Guidelines for Qualification

- We request that participants do not change their PY, PT or unit details mid-process between the qualification date and FCAR date
- Pre-registration of new parties/ units is to be completed prior to submitting Qualification Applications, this is to prevent delays during the qualification process.
- Please register any new units as soon as possible. This should be done before the Qualification deadline to minimise delays.



Form Checks - Reoccurring Corrections

Please check the following before submitting your form/s:

- the PY, PT, CMU and CU IDs are formatted correctly i.e. PY_XXXXXX.
- evidence is provided for the CO2 emissions - this includes evidence if you are within or above the threshold
- an excel and PDF form is submitted in your application
- the confirmation signature is attached with your Qualification application pack
- the Initial Capacity and Nominated Capacity values are correct
 - If 0 MW is nominated and the candidate unit has a DECTOL of 100%, the unit will be qualified at 0 MW
- you have submitted the correct unit ID/s for your party
- the PY ID is submitted when asked for the PY, and similarly the PT is submitted where PT ID is requested

Please refrain from using previous templates from previous qualifications as the forms may have been updated and, also the information may be incorrect

Finally, please complete 2nd checks on all completed forms before submitting to the TSOs. Any corrections will result in having to re-sign and re-submit qualification forms.



CMP - Access

All Capacity Auctions take place on an internet-based program known as the Capacity Market Platform (CMP). CMP is provided by its vendor, Unicorn Systems.

Access is granted to CMP via the registration process. All users will require a username, password, and digital certificate to log into the CMP successfully.

There are three different user role types within CMP: Trading, Reporting and Administrative Users.

Guides for each user role type can be found via the following links:

[Capacity Market Participant - Trading User](#)

[Capacity Market Participant - Reporting User](#)

[Capacity Market Participant - Administrator User](#)

To log into CMP, you must first have a user account set up in CMP. You must also be a participant in the Capacity Market - access is only granted to those of this status.



New Party

- If you are a New Party, requesting access, this is done by contacting the Capacity Market Team via email and submitting the relevant [C02](#) form located on the SEMO website.
- Once the form is received and processed, we will add the relevant PAU/s (Party Authorised User) to our records. We will also contact our IT team to issue a certificate to install.
- Once the certificate email is received this must be installed within 10 workings days or it will expire, and you will have to contact us again to resend.
- Once the certificate is installed you need to advise the team of the full serial number (copied and pasted) and the valid to and from date. Once we receive that information we will then advise of your password.
- If you require an additional PAU to be added, or to remove a PAU you must submit a [C02](#) or [C03](#) form, respectively.

Existing Party

- If you are an Existing Party adding a new user, you must contact your current PAU/s to set up your user account on CMP first.
- Guides are available on CMP at the main menu drop down if required.
- Once the PAU has set up your user account, you need to contact the capacity team to issue a certificate to install. Once the certificate is installed you need to advise the team of the full serial number (copied and pasted) and the valid to and from date. Once we receive that information we will then advise of your password.
- If you require an additional PAU to be added, or to remove a PAU you must submit a [C02](#) or [C03](#) form, respectively.



Certificates

Any time a new certificate is installed you need to advise the team of the full serial number and the valid to and from date.

Guides for installing a certificate or providing serial numbers below:



How to get certificate details (as Web Page)



Export, Import and Renew Security Certificates_PKI.PDF

When your cert is about to expire, you will receive a reminder advising to renew your cert 30 days before expiry.

You will not be able to access the system if you don't renew the Cert.

Once the cert is renewed you must have these new cert details updated in CMP. This can be done by a PAU or by contacting the capacity team. You can check when your cert is about to expire in PKI.

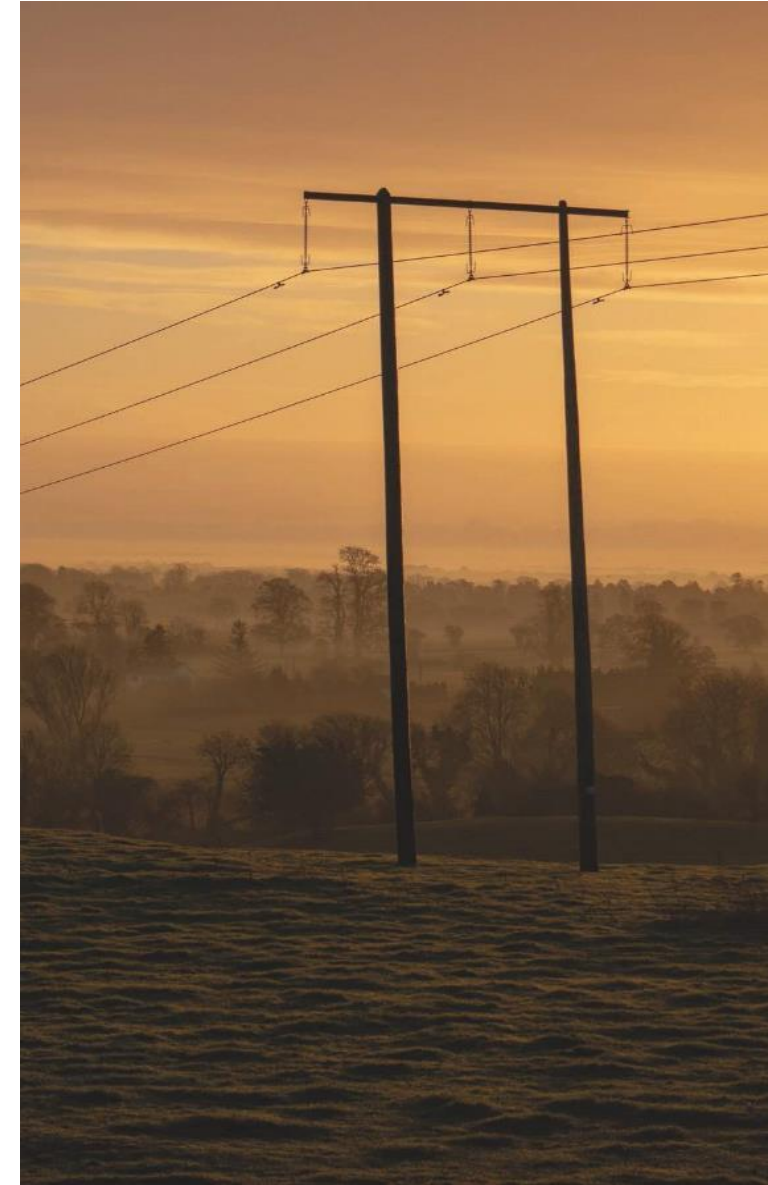
Logging into CMP is done by the following steps:

- Clear your cache
- Use Google Chrome
- Access CMP website - <https://cmp.eirgrid.com>
- Select the correct Certificate - (When you have selected the correct cert your username will pre-populate if it does not pre-populate the incorrect cert could have been selected).
- Once the correct Cert is selected, the CMP page will open with the Username pre-populated. If the Username did not pre-populate, don't go any further, as by typing in your Username does not work and you can be temporarily locked out of your account.
- If your Username has pre-populated, then type in your password



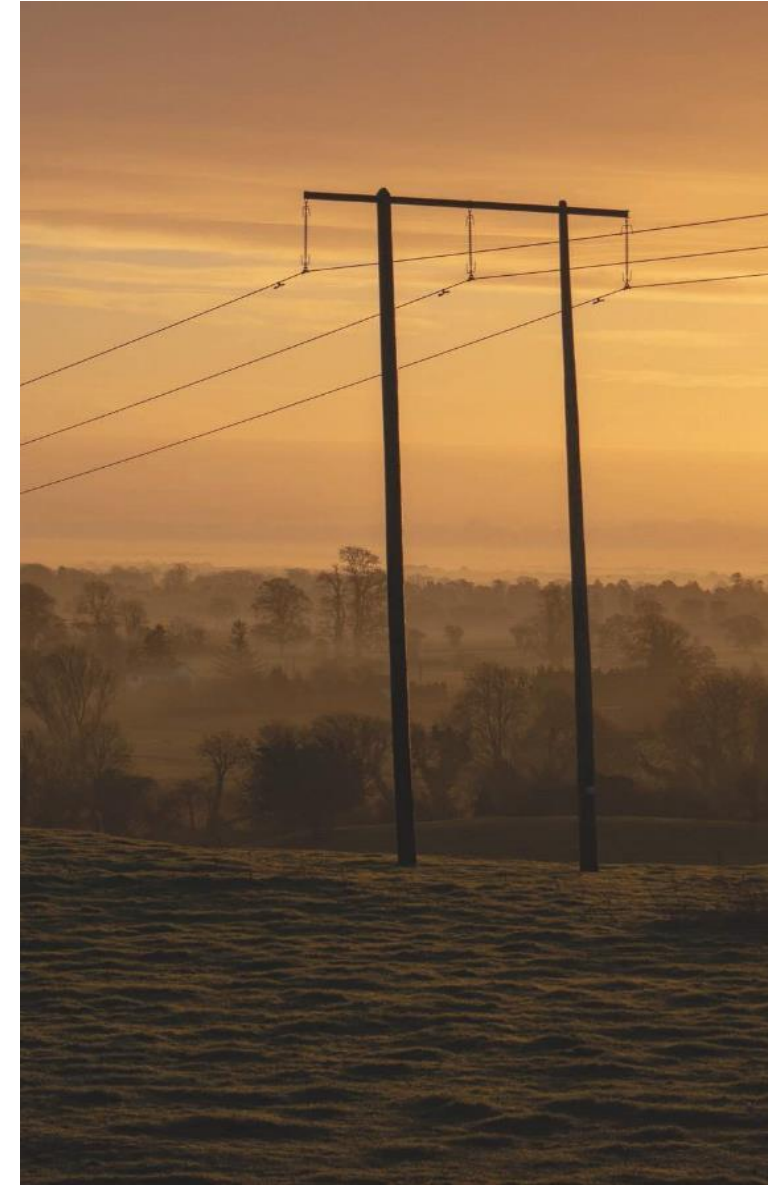
Capacity Market Platform Tips

- Requests relating to CMP access should come directly from the affected user or from the PAU. Passwords will only be shared with the user.
- The same digital Certificate is used for both BM and CM Platforms. Therefore, please do not request two certificates from different teams.
- If you have recently requested and installed a new certificate, please ensure to forward details (full serial number and valid to/from dates), so that your access to CMP can be updated. If the new cert details are not added to CMP you will not have access.
- You can use the same cert on several machines
- Users will not be required to access the CMP until the Provisional Qualification Results Date. We recommend users log into the CMP a week or two before the Provisional Qualification Results Date to ensure their have access



Capacity Market Platform Tips

- The C02 form is for the Capacity Market only. The B02 form is related to PAUs for the Balancing Market
- If your username does not prepopulate on selection of your cert do not go any further and contact the team. You cannot type in your username
- If you have renewed your cert, or your cert has automatically renewed on PKI these details have to be updated in CMP.
- A PAU maintains user access on behalf of the Party, so it is important that all PAUs ensure their accounts and details are maintained up to date.



Please check all formatting of the information you are providing .

Guidance notes are included along with some data entry cells to ensure full understanding of what is being requested.

Please read the “Read Me” guide. It provides an explanation of what is required in each form, and contains helpful information in completing the form correctly.

Any form completed with a Confirmation and Signature tab must be signed by the Company Director. The signature tab scanned and emailed along with the application to:

CapacityMarket@sem-o.com (for Existing Parties Qualification Forms)

CapacityMarketRegistration@sem-o.com (for new Parties Registration Forms)

If you have any questions specific to your qualification forms, please ensure you submit them to the Capacity Market email address before the Qualification deadline



Questions from session...



If we submit a draft application before the qualification submission deadline, can the TSOs review and provide feedback in advance of the submission deadline?

Due to the volume of applications that are to be submitted, it is not possible for the TSOs to review and provide feedback to Participants on their application in advance of the formal submission deadline.

There are mechanisms under the Capacity Market Code for any errors to be rectified or omissions to be added during the Qualification review period.

If I am successful in qualifying New Capacity, do I have to offer that capacity into an auction?

Participation for New Capacity is not mandatory. A Participant can offer in none, some, or all of its qualified Net De-Rated Capacity.

If a participant does not wish to offer any of its qualified Net De-Rated Capacity into the auction, then no action needs to be taken. An automatic offer will not be submitted.

I have a site where I plan to submit an application for a large unit; however, I am not fully certain on the configuration at this stage and may wish to submit for a number of smaller units instead. Should I submit multiple applications or just one?

Participants should only submit Applications for Qualification for the amount of Capacity they are seeking to offer into the Capacity Auction and ultimately build. Participants should not submit multiple configurations of the same Capacity.

Where multiple instances of the same capacity are submitted, there is a risk that the total amount is not feasible, and the Applications for Qualification may be rejected on this basis.

Participants may offer any amount from 0 MW up to qualified Net De-Rated Capacity New at the auction stage.

In addition, there are mechanisms under the Capacity Market Code whereby the Awarded Capacity can be reconfigured, after the auction has taken place, across multiple units in accordance with B.21 of the Capacity Market Code, subject to approval by the Regulatory Authorities.

I wish to apply for an Intermediate Length Contract (ILC). Where do I submit my application?

On the Application for Qualification forms, where do I signal that I have applied to the RAs for an ILC?

Applications for intermediate length should be submitted to the Regulatory Authorities by the 4th June 2024. email details are on Slide 8

On the Application for Qualification forms, where it asks if a Maximum Capacity Duration >1 year for New Capacity has been applied for, a Participant should choose the 'yes' option. Further details of the proposed refurbishment should be provided in the Implementation Plan.