



Market Operator Monthly Report

August 2014

Table of Contents

1	EXECUTIVE SUMMARY	4
2	MONTHLY STATISTICS	5
	CODE BREACHES	5
	JOINING AND TERMINATING PARTIES AND UNITS	6
	SUSPENSION OF PARTICIPANTS	6
3	FINANCIAL STATISTICS.....	7
	TOTAL CHARGES FOR EACH CURRENCY.....	7
	TOTAL PAYMENTS FOR EACH CURRENCY	8
	TOTAL BALANCING COSTS.....	9
	TOTAL CURRENCY COSTS.....	11
	CUMULATIVE IMPERFECTIONS COSTS Vs BUDGET	12
	FINANCIAL CHANGES BETWEEN INITIAL SETTLEMENT AND SUBSEQUENT RERUNS.....	13
	3.1.1 <i>Energy Market</i>	<i>13</i>
	3.1.2 <i>Capacity Market.....</i>	<i>16</i>
4	HELPDESK CALL STATISTICS	21
5	DISPUTES AND QUERIES	22
	LIST OF DISPUTES BY TOPIC.....	22
	LIST OF QUERIES BY TOPIC.....	22
	5.1.1 <i>Data Queries</i>	<i>22</i>
	5.1.2 <i>Settlement Queries.....</i>	<i>22</i>
	UNRESOLVED QUERIES.....	23
6	CENTRAL SYSTEMS	24
	PROPORTION OF DEFAULT DATA USED	24
	PROPORTION OF ESTIMATED METER DATA USED IN INITIAL SETTLEMENT AND RESETTLEMENT	24
	LIST OF SYSTEM ERRORS AND RE-RUNS.....	24
	6.1.1 <i>Re-Pricing and Resettlement Runs</i>	<i>24</i>
	6.1.2 <i>System Errors.....</i>	<i>24</i>
	6.2 OPERATIONAL TIMINGS.....	25
	6.2.1 <i>MSP Postings August 2014.....</i>	<i>25</i>
	6.2.2 <i>MSP Algorithms.....</i>	<i>28</i>
	6.2.3 <i>Settlement Postings August 2014</i>	<i>29</i>
	6.5 MARKET SYSTEM RELEASES.....	30
7	OCCASIONAL COMPONENTS	31
	7.1 DISASTER RECOVERY/BUSINESS CONTINUITY TESTS	31
	7.2 ADMINISTERED SETTLEMENT.....	31
	7.3 COMMUNICATIONS OR SYSTEMS FAILURES	31
	7.4 DENIAL OF SERVICE ATTACKS.....	31
	7.5 SUBMISSION OF PARAMETERS TO RAs FOR APPROVAL.....	32
8	APPENDIX A: DETAIL OF CODE BREACHES	33
	MARKET PARTICIPANT	33
	DATA PROVIDER	33
	SEMO - PRICING AND SCHEDULING	33
	SEMO – SETTLEMENTS.....	33
	SEMO - FUNDS TRANSFER	34
	SEMO - CREDIT MANAGEMENT.....	34
	SEMO – OTHER.....	34
9	APPENDIX B: LIST OF QUERIES BY TYPE	35
	DATA QUERIES.....	35
	SETTLEMENT QUERIES.....	36

Market Operator Monthly Report

10	APPENDIX C: LIST OF ALL SYSTEM ERRORS AND FAILURES	38
11	APPENDIX D: DETAILS OF OPERATIONAL TIMINGS	39
	MARKET SCHEDULE AND PRICE RUNS	39
	SETTLEMENT RUNS	40
12	APPENDIX E: IMPERFECTIONS CHARGE	41
13	APPENDIX F: DEFAULT COMMERCIAL OFFER DATA USED	50
14	APPENDIX G: TOTAL CHARGES AND PAYMENTS DATA	54
15	APPENDIX H: FULL BALANCING COSTS	56
	TRADING MARKET	56
	CAPACITY MARKET	57
16	APPENDIX I: MSP ALGORITHMS	58

1 Executive Summary

This Single Electricity Market Operator's (SEMO) report covers the month of operation of August 2014 and is published in accordance with the Single Electricity Market (SEM) Committee decision and Clause 2.144 of the Trading and Settlement Code. Trading and Settlement Code

During the month of August 2014, Settlements had no late publications as per the Trading and Settlement code.

145 general queries were received in August 2014. During the same period 139 general queries were resolved.

There were three defaults by Participants during August 2014. The largest of these was an Energy Initial invoice for €24,633.41 which was remedied on the same day.

Formal queries continue to be answered well within the timelines stipulated in the Trading and Settlement (Code).

2 Monthly Statistics

Code Breaches

Breaches of the Trading & Settlement Code were noted in the following areas.

Code Breaches			
Area		Major	Minor
Data Providers		1	5
Market Participants	Pricing & Scheduling	-	-
	Settlement	-	-
	Funds Transfer	3	-
	Credit Risk Management	-	-
SEMO	Pricing & Scheduling	-	-
	Settlement	-	-
	Funds Transfer	-	-
	Credit Risk Management	-	-
	Other	-	-
Total		4	5

Table 1 - Code Breaches

Further details of each of the code breaches noted above are set out in [Appendix A](#)

Key:

- Major Breach - late publishing of invoices, default notices issued for non-payment or similar.
- Minor Breach - deadlines not met, but any financial implication to Participants. This includes late posting of pricing and settlement runs.

Joining and Terminating Parties and Units

One party joined the Market in August 2014

- Cnoc Energy Supply Limited (PY_000132)

There were no terminating parties in August 2014.

Two new units became effective in the Market in August 2014

- Endeco Technologies – DSU (PT_400133 / DSU_401530)
- Endeco Technologies – TSSU (PT_400134/SU_400171)

No units were de-registered from the Market in August 2014

Suspension of Participants

There have been no Suspension Orders issued by the Market Operator at this time.

3 Financial Statistics

Total Charges for Each Currency

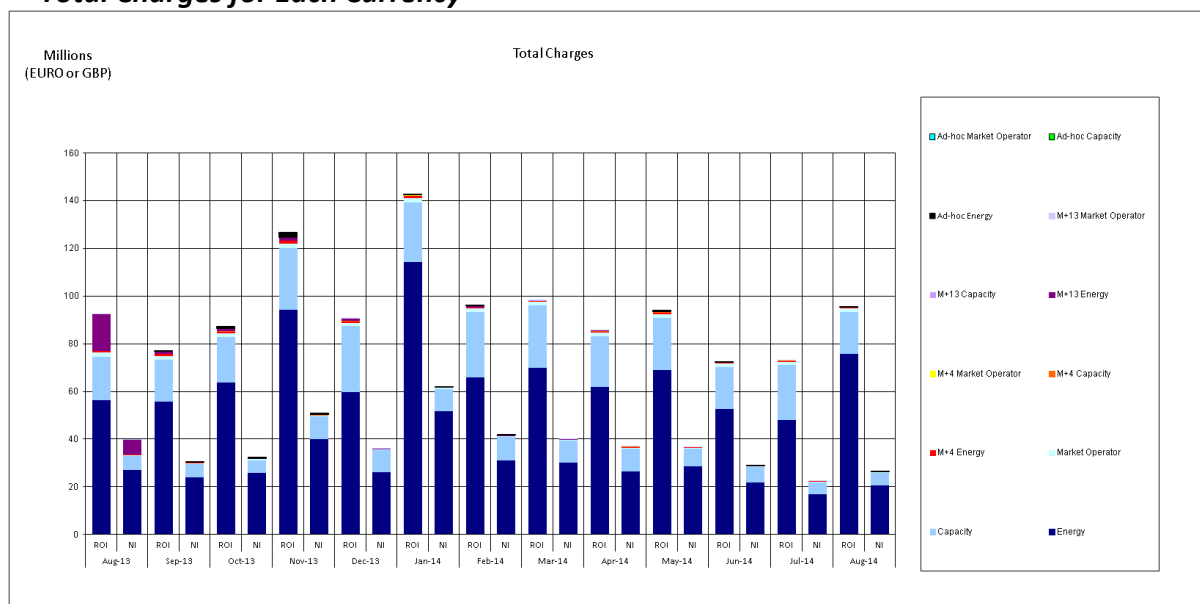


Figure 1 - Total Charges for Each Currency

Market	August 2014	
	ROI	NI
Energy	€75,858,679	£20,792,698
Capacity	€17,424,468	£5,164,102
Market Operator	€1,576,396	£404,571
M+4 Energy	€255,749	£73,223
M+4 Capacity	€41,218	£16,729
M+4 Market Operator	€1,835	£695
M+13 Energy	€112,981	£40,447
M+13 Capacity	€0	£0
M+13 Market Operator	€1,328	£492
Ad-hoc Energy	€123,147	£11
Ad-hoc Capacity	€0	£0
Ad-hoc Market Operator	€0	£0
Total	€95,395,800	£26,492,967

Table 2 - Total Charges for Each Currency

Notes relating to Table 2 and 3:

- Month of inclusion based on Invoice Date.
- Amounts are after application of Settlement Reallocations.
- Previous month's data is available in [Appendix G](#).

Total Payments for Each Currency

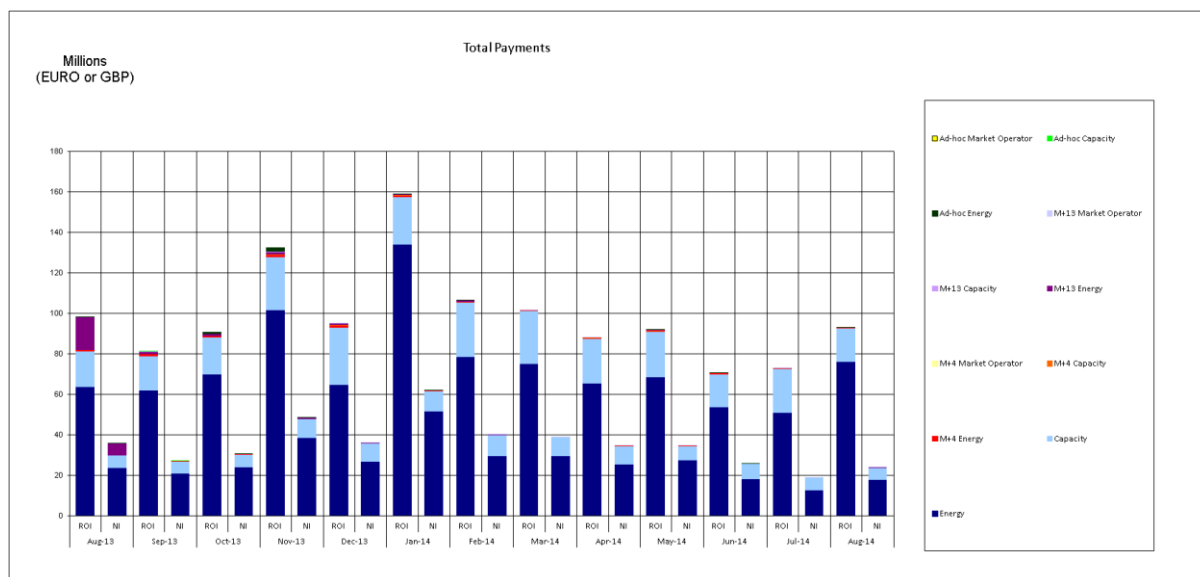


Figure 2 - Total Payments for Each Currency

Market	August 2014	
	ROI	NI
Energy	€76,295,372	£17,954,420
Capacity	€16,503,906	£5,911,053
M+4 Energy	€283,974	£74,371
M+4 Capacity	€42,797	£15,554
M+4 Market Operator	€2,738	£864
M+13 Energy	€125,676	£54,425
M+13 Capacity	€0	£0
M+13 Market Operator	€1,328	£489
Ad-hoc Energy	€29	£7
Ad-hoc Capacity	€0	£0
Ad-hoc Market Operator	€0	£0
Total	€93,255,820	£24,011,182

Table 3 - Total Payments for Each Currency

Total Balancing Costs

Balancing Costs arise in the Energy and Capacity markets when the summed payments to the SEM from Participants in respect of their Supplier Units do not meet the summed payments to Participants from the SEM in respect of their Generator Units.

Although, it is intended the Energy Payments and Energy Charges should be balanced through the mechanism of the Error Supplier Unit in each jurisdiction, because Energy Payments are made against Market Schedule Quantities while the Error Supplier Unit volumes are calculated against Metered Generation, the different application of Loss Factors means that there is frequently an imbalance between the Energy Payments and Energy Charges.

With regard to the Energy Settlement, the Balancing Costs have been calculated as follows for the entire month:

August 2014	
Imbalance (Energy Only)	-€12,079,793.53

Table 4 - Balancing Costs for Energy Settlement

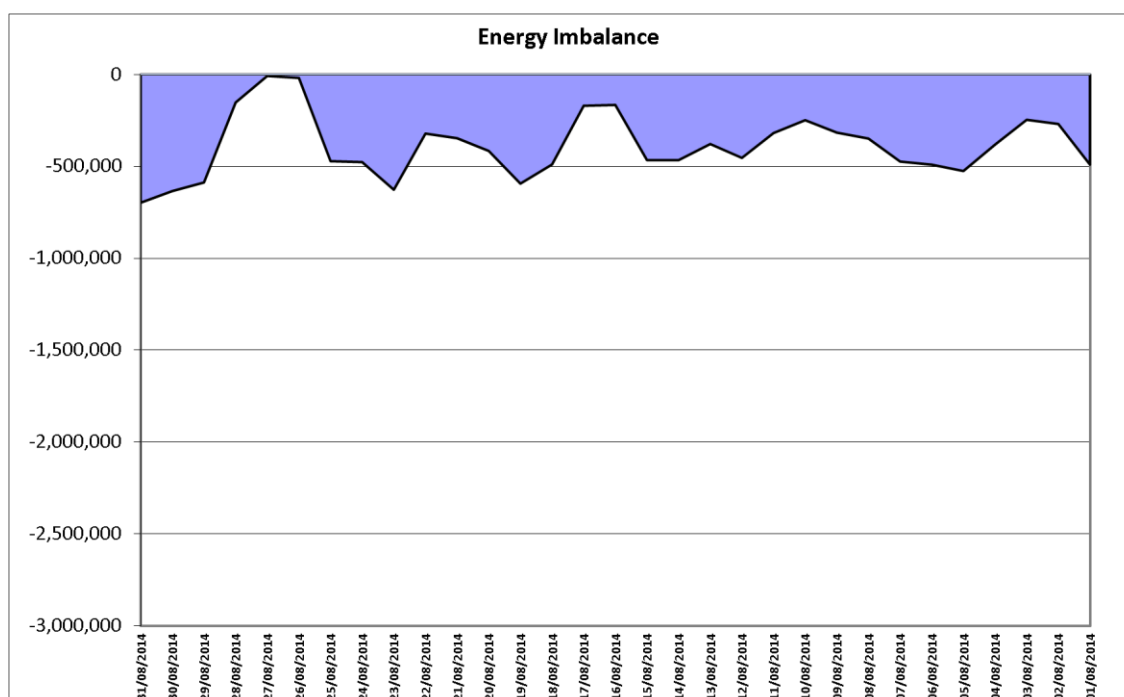


Figure 3 – Energy Imbalances

The full Balancing Cost of the SEM is determined by the summation of the daily payment amounts for Energy Imbalance, Constraint Payments, Uninstructed Imbalance Payments, and Imperfections Charges combined with the weekly Make Whole Payments and Testing Charges.

Market Operator Monthly Report

Historical values for testing charges have been provided in [Appendix E](#) .

The figures for the full Balancing Cost of the SEM since the last Market Operator report are shown below, as well as the VAT Balancing Costs.

In tables 5 and 6 below:

- Positive values indicate Payments were greater than Charges.
- Negative values indicate Charges were greater than Payments.

Date Of Invoice	Week No	SEM Balancing Costs	VAT Balancing Costs
01/08/2014	29	-€733,534.70	€87,761.77
08/08/2014	30	-€782,697.01	€42,298.74
15/08/2014	31	-€744,168.26	€49,090.55
22/08/2014	32	-€190,165.89	€ 8,449.19
29/08/2014	33	-€99,247.82	-€35,603.87

Table 5 - Balancing Costs for Trading Payments and Charges

SEM Balancing Costs are provided based on daily exchange rates, VAT Balancing Costs are based on the Invoicing day exchange rate. VAT Balancing costs exclude Currency Cost related VAT.

It is intended that the algorithms set out in the Trading and Settlement Code will lead to a balanced Capacity Market. However, rounding precisions within the systems may result in an imbalance being introduced into the equations. This imbalance may lead to funding requirements to ensure that all payments out are made as per the terms of the Code.

With regard to the Capacity Settlement, the Balancing Costs have been as follows:

August 2014	
Capacity Charges	€-37,906,769.45
Capacity Payments	€37,906,532.6
Balancing Costs	€-236.85
VAT	€95.72

Table 6 - Balancing Costs for Capacity Settlement

Market Operator Monthly Report

Historical figures, the current financial year full Balancing Costs for both Trading and Capacity are provided in [Appendix H](#). VAT Balancing costs exclude Currency Cost related VAT.

Total Currency Costs

Currency Costs in the SEM are calculated with respect to the difference in Exchange Rates due to two components:

- 1) Invoice Currency Costs: - in respect of the difference between the Trading Day Exchange Rate (and Annual Capacity Exchange Rate in respect of Capacity Settlement) and the Exchange Rate on the Date of Invoice (being the date of issue of the Invoice) for Trading Payments and Charges.
- 2) Payment Period Currency Costs: - in respect of the difference between the Exchange Rates between the Date of Invoice and the Date of Payment.

Although the Code uses the term Currency Cost, the currency differences may end up as a benefit or a cost to the Participant depending on how the Exchange Rate fluctuates between the Billing Period, Invoice Date and Payment Date. In the table below, where this value is positive this means there was an overall benefit to Participants, negative values mean there was an overall cost to Participants resulting from trading in two currencies. Figures are shown in Sterling (£).

Last Date Of Billing Period	Date Of Invoice	Week No	Currency Costs For Energy Settlement (Invoice and Payment)	Currency Cost Adjustment for Inter-jurisdictional SRAs	Total Currency Cost
26/07/2014	01/08/2014	29	-£6,555.99	£-	-£6,555.99
02/08/2014	08/08/2014	30	-£1,098.99	£-	-£1,098.99
09/08/2014	15/08/2014	31	-£25,607.17	£-	-£25,607.17
16/08/2014	22/08/2014	32	£5,782.58	£-	£5,782.58
23/08/2014	29/08/2014	33	£4,537.81	£-	£4,537.81

Table 7 - Total Currency Costs for Trading Payments and Charges

The Total Currency Cost figures detailed above show the Currency Cost for each Billing Period including Invoice Currency Costs, Payment Period Currency Costs, and Inter-jurisdictional SRA Currency Costs.

Over the period of this report Currency Costs for each week represented a benefit to Participants of up to £5,782.58 and a cost of -£25,607.17. Whether Currency Costs are a cost or benefit to Participants is directly related to whether the currency is rising or falling between the billing period, invoice date and payment dates.

Settlement Reallocation Agreements between the two currency zones continue to present volatility in the Currency Costs that appear in the Energy market each week. The value of these adjustments is detailed separately above in each Billing Period.

The Currency Costs, for the current financial year, with respect to Initial Capacity Settlement are set out below. Figures are shown in Sterling (£).

Market Operator Monthly Report

Date Of Invoice	Capacity Month	Currency Costs For Capacity Settlement
12/08/2014	August 2014	£17,209.76

Table 8 - Total Currency Costs for Capacity Payments and Charges

Cumulative Imperfections Costs Vs Budget

The value of Cumulative Imperfections Costs Vs Budget is calculated as the sum of Total Constraint Payments, Total Uninstructed Imbalance Payments, Total Testing Charges and Total Make Whole Payments, as compared against the Total Imperfections Charges, being the weekly budget for these Imperfections Costs.

These values have been collected across the months since the start of the new financial year, 1st October 2013. The values expressed in Euros are as follows.

This table makes use of the values taken from the Initial Settlement Run of Trading payments and charges.

Total Constraint Payments	Total Uninstructed Imbalance	Total Make Whole Payments	Total Imperfections
€162,679,216.20	-€2,312,311.78	€3,725,703.76	-€120,402,753.89

Table 9 – Cumulative Imperfections Costs Vs Budget

This is demonstrated in the figure below.

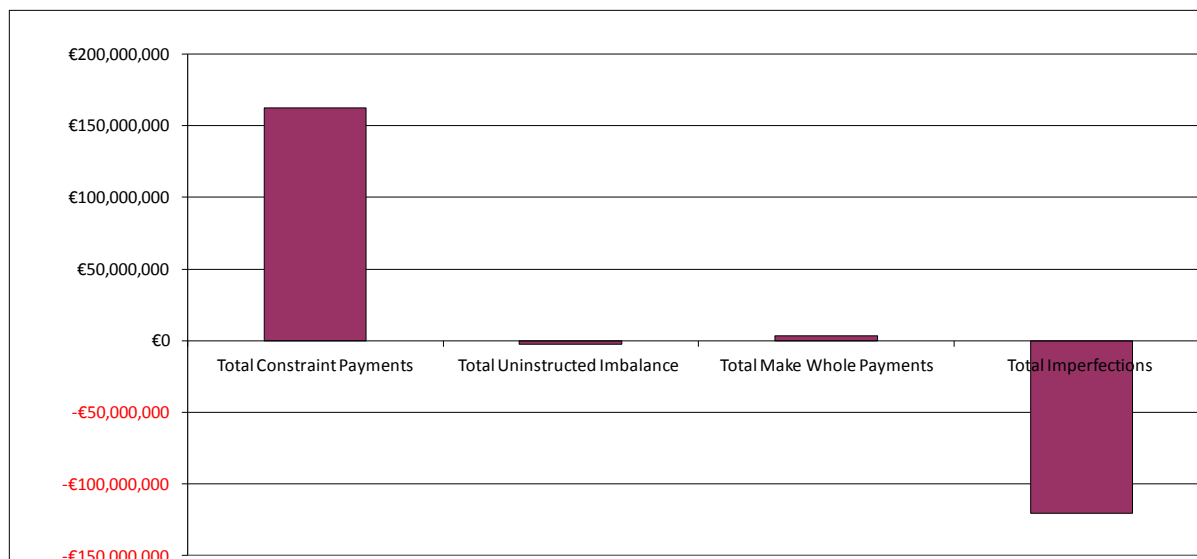


Figure 4 - Cumulative Imperfections Costs Vs Budget

The daily and weekly data that comprised these values is shown in [Appendix E](#).

Market Operator Monthly Report

Financial Changes between Initial Settlement and Subsequent Reruns

The following graphs provide a breakdown of resettlement amounts for the M+4 resettlement period of April 2014 and M+13 resettlement period of July 2013 for Energy and Capacity.

3.1.1 Energy Market

Note: - For Figure 6, 8, 9, net values are shown.

- Positive amounts indicate net additional payments by Participants (Charges).
- Negative amounts indicate net additional payment to be made to Participants (Payments).

The reverse is true for Figure 7 & 10.

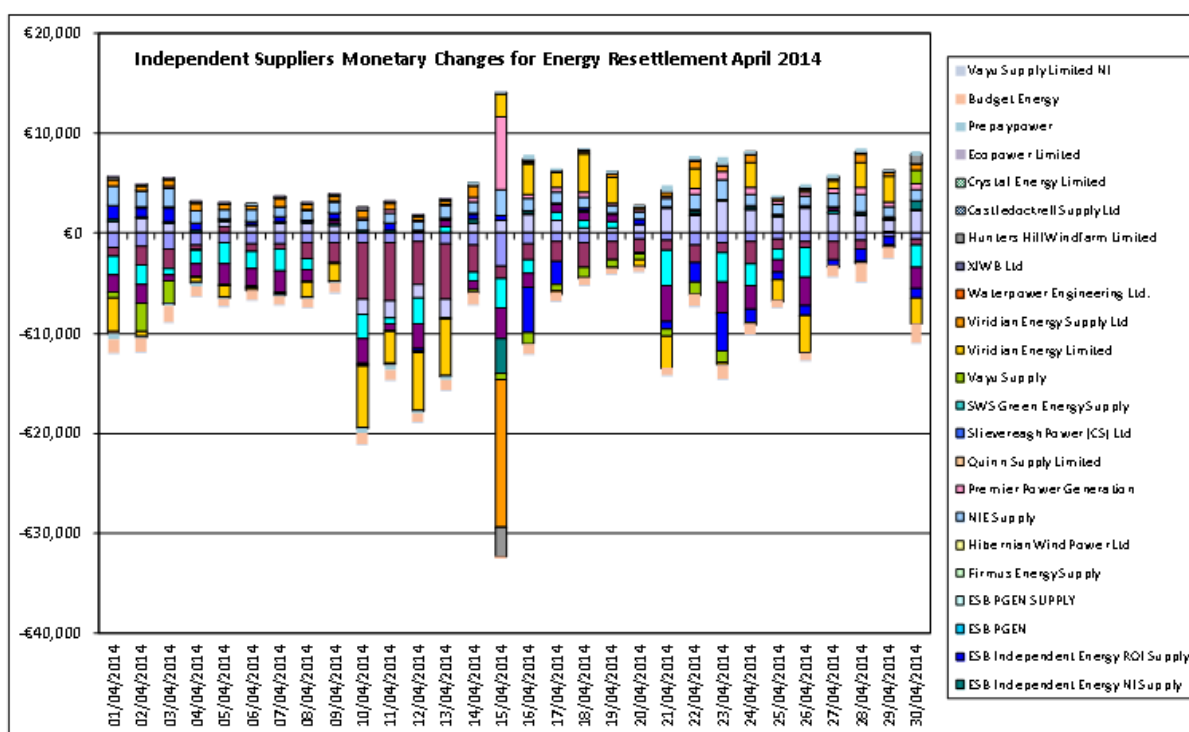


Figure 5 – Independent Suppliers Monetary Changes for Energy Resettlement – April 2014

The above variances relates purely to rounding for Participants between Initial and M+4 Resettlement.

Market Operator Monthly Report

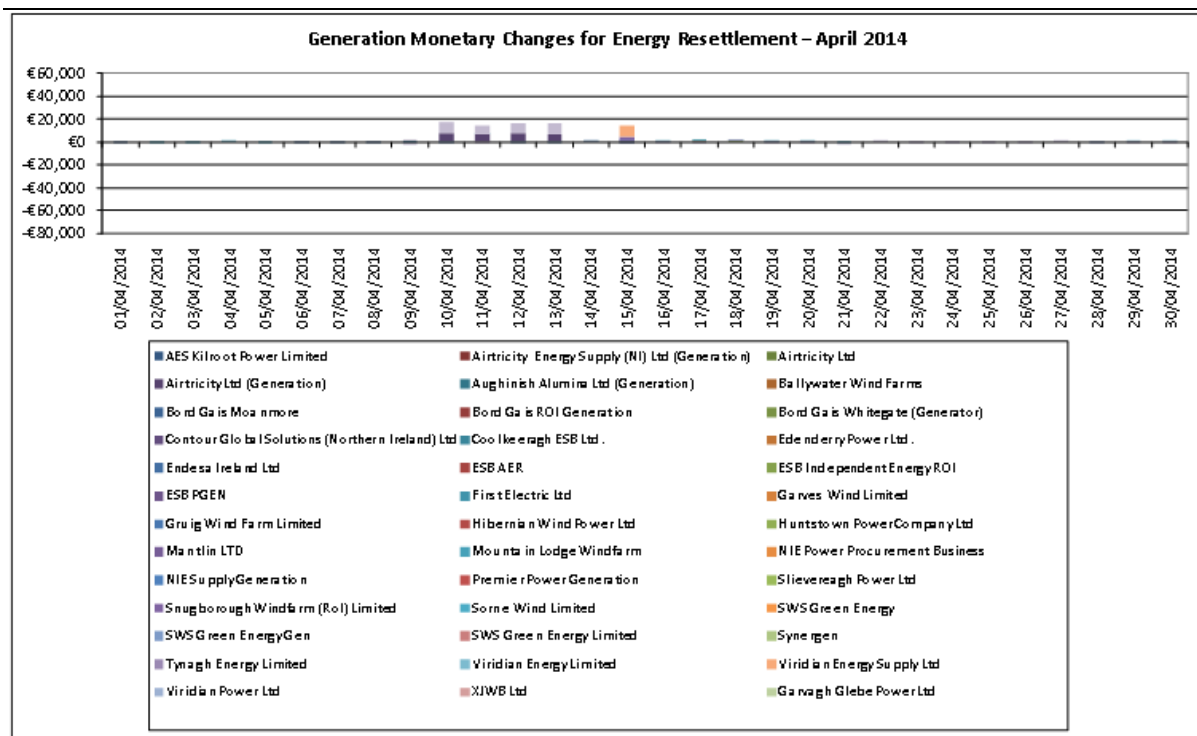


Figure 6 – Generation Monetary Changes for Energy Resettlement – April 2014

Changes noted above are driven by updates to Meter Data.

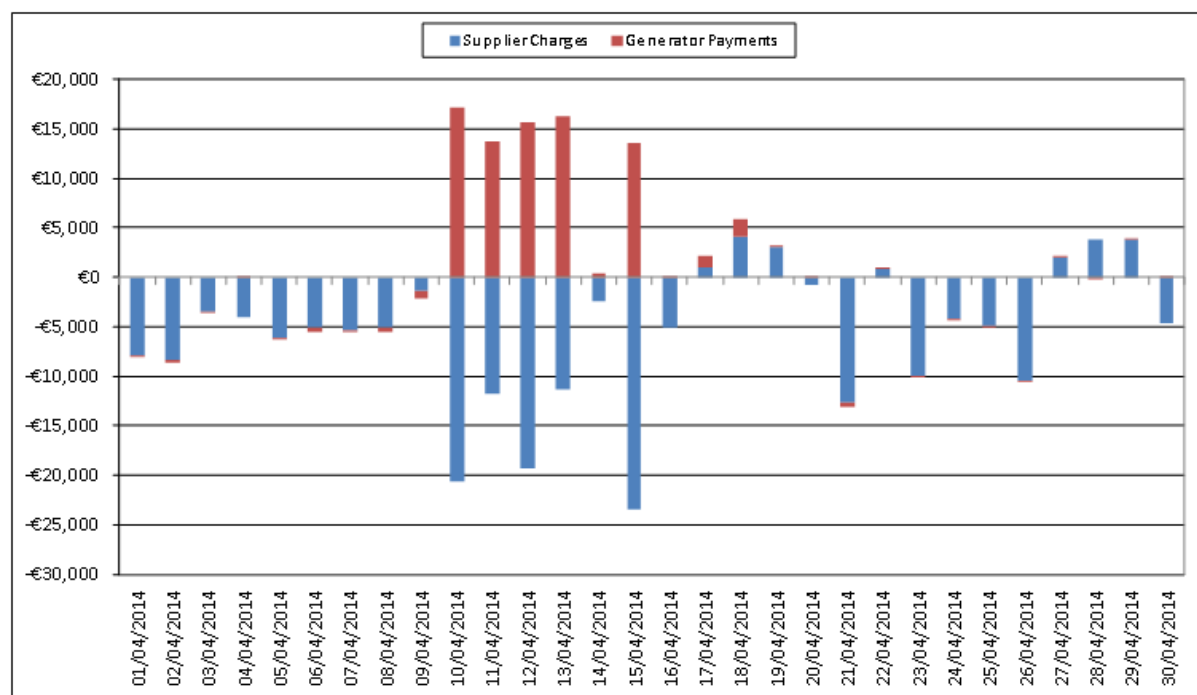


Figure 7 – Total Monetary Changes for Energy Resettlement – April 2014

M+13 Resettlement

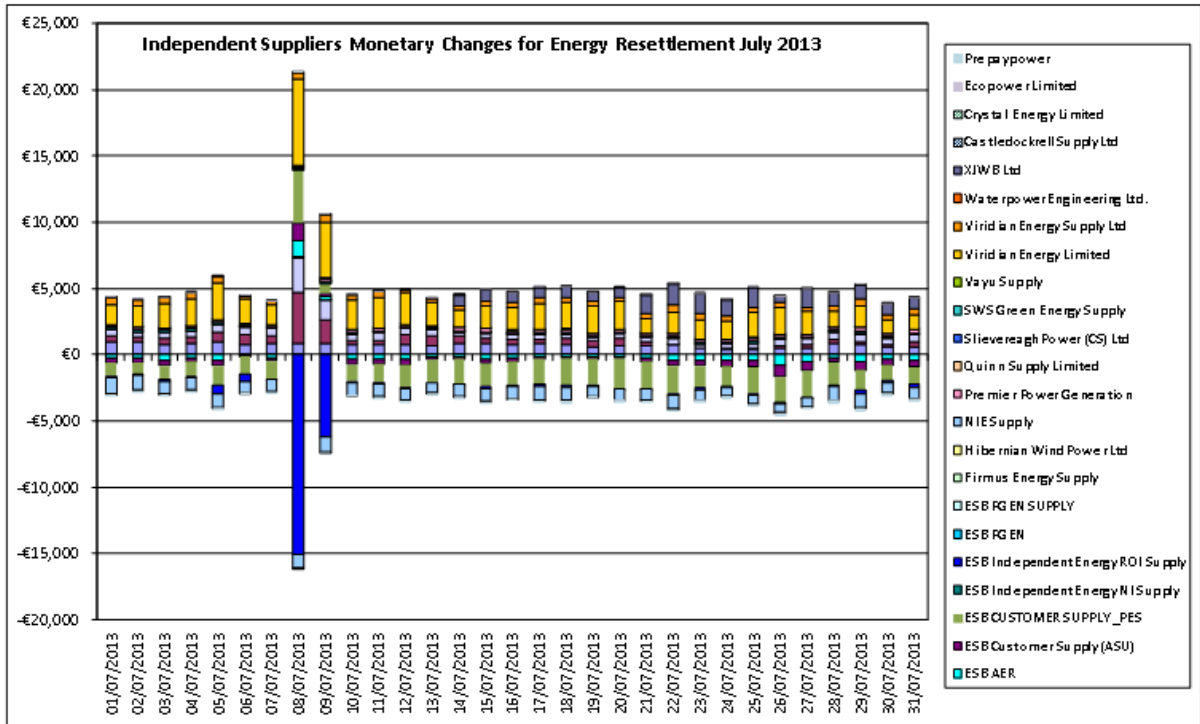


Figure 8 - Independent Suppliers Monetary Changes for Energy Resettlement – July 2013

The above variances relates purely to rounding for Participants between M+4 and M+13 Resettlement.

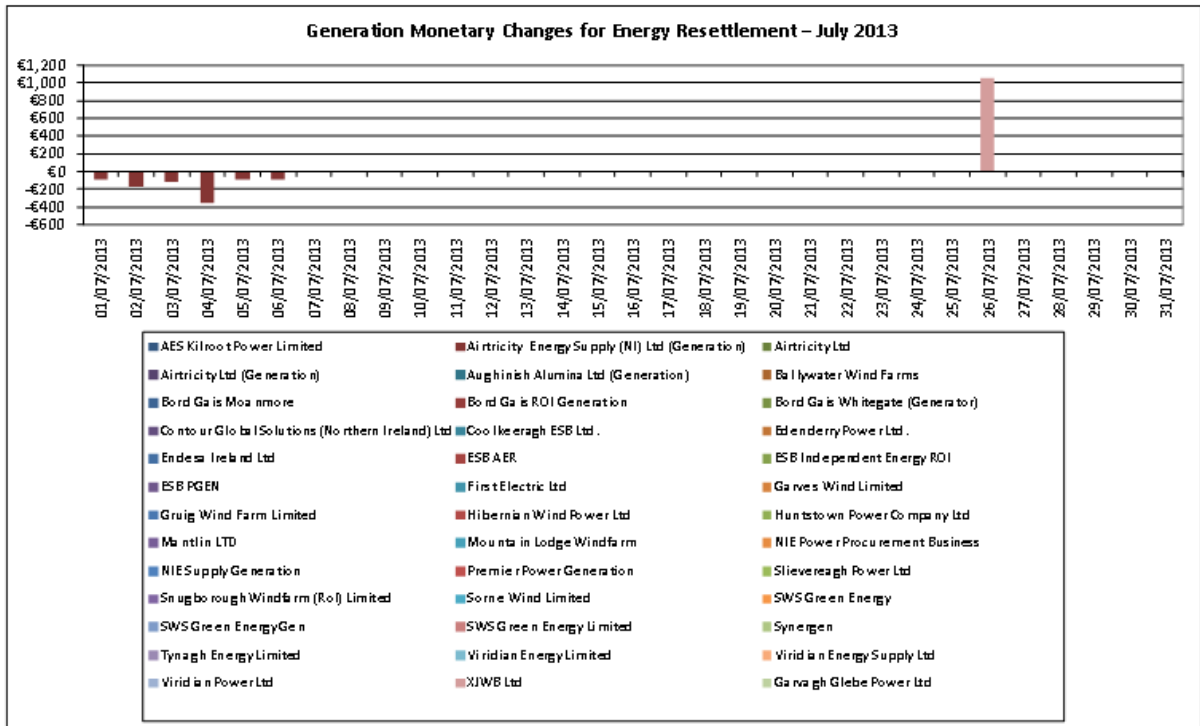


Figure 9 - Generation Monetary Changes for Energy Resettlement – July 2013

Market Operator Monthly Report

Changes noted above are due to updated Meter Data, Loss Factors and Dispatch Quantities.

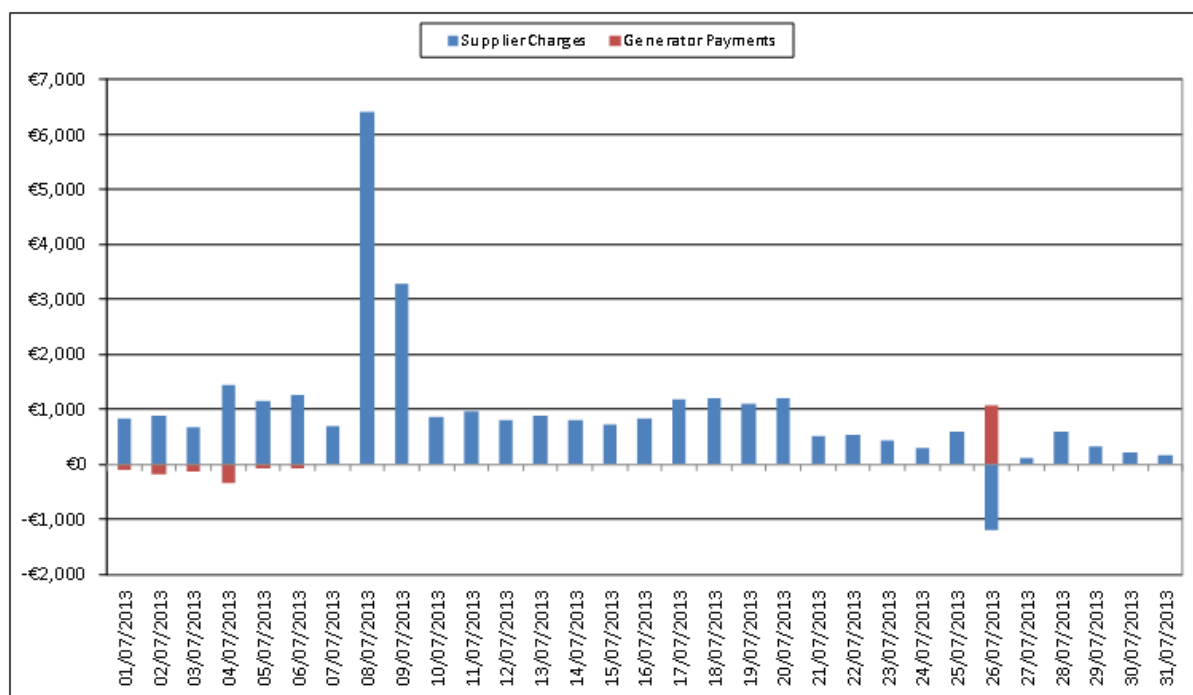


Figure 10 - Total Monetary Changes for Energy Resettlement – July 2013

3.1.2 Capacity Market

Note: - For Figure 12, 13 & 16 net values are shown.

- Positive amounts indicate net additional payments by Participants (Charges).
- Negative amounts indicate net additional payment to be made to Participants (Payments)

The reverse is true for Figure 14 & 22.

The changes in Capacity are graphed below showing the variance in monetary terms as opposed to percentage terms. As the Jurisdictional Error Supply Units can be significantly affected by resettlement, this is more reflective of the monetary redistribution in M+4 and M+13. Please also note that as of June 2011 the Jurisdictional Error Supply Unit (ROI) is now a Retail Supply unit. The Jurisdictional Error Supply Unit (NI) is unchanged.

M+4 Resettlement

Under resettlement, charges originally attributed to the Jurisdictional Error Supplier Units, have now been redistributed among Market Participants.

Market Operator Monthly Report

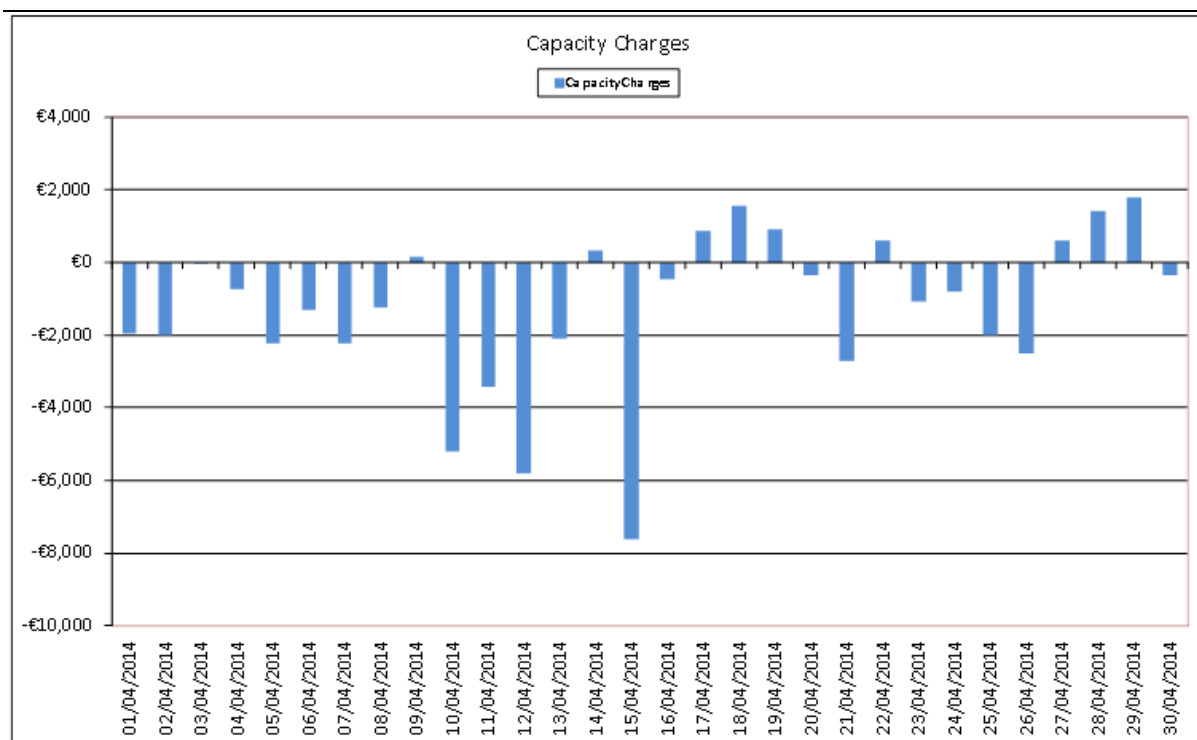


Figure 11 - Independent Suppliers Monetary Changes for Capacity Resettlement – April 2014

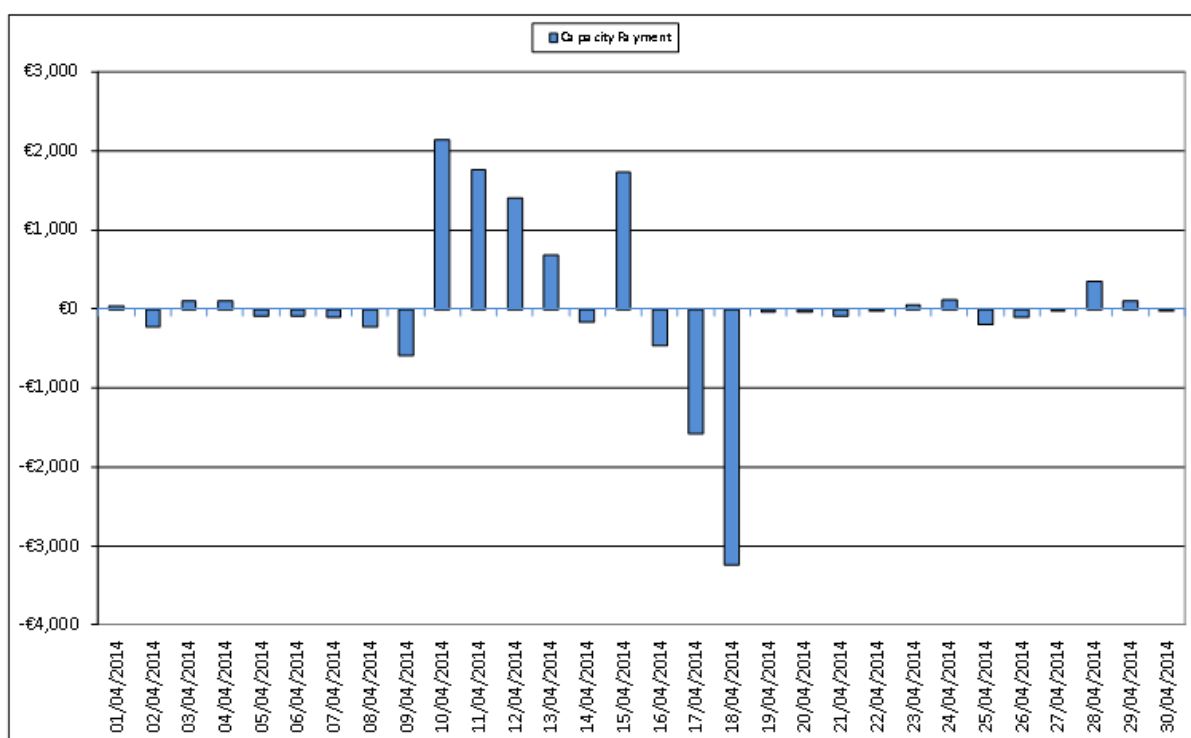


Figure 12 - All Generation Monetary Change for Capacity Resettlement – April 2014

The changes above are driven by updated meter data for Autonomous Price Taker Generators.

Market Operator Monthly Report

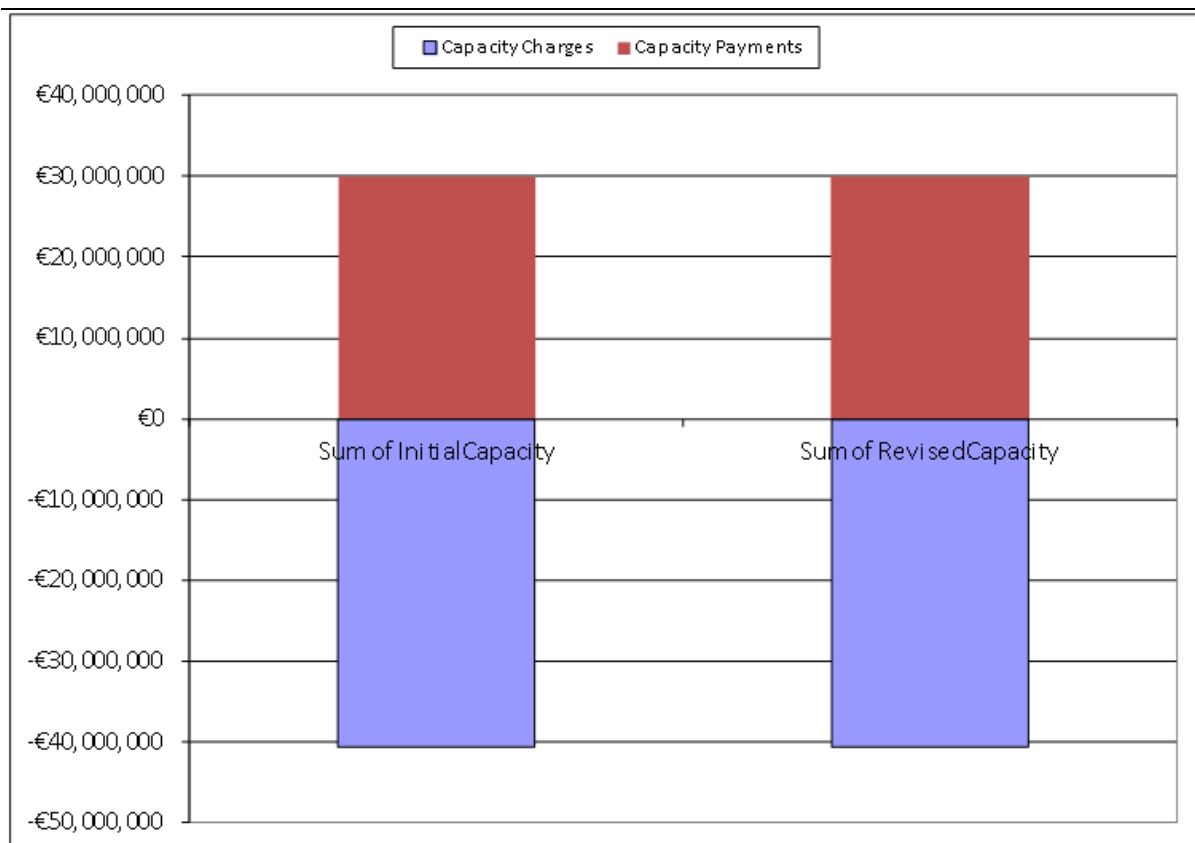


Figure 13 - Comparison of Distribution of Monetary Amounts between Capacity Initial and Resettlement April 2014

The above graph demonstrates that due to all the individual changes to payment and charge amounts on a Supplier or Generator Unit basis, the overall Capacity Market resettlement Charge and Payment amounts have not changed due to resettlement.

M+13 Resettlement

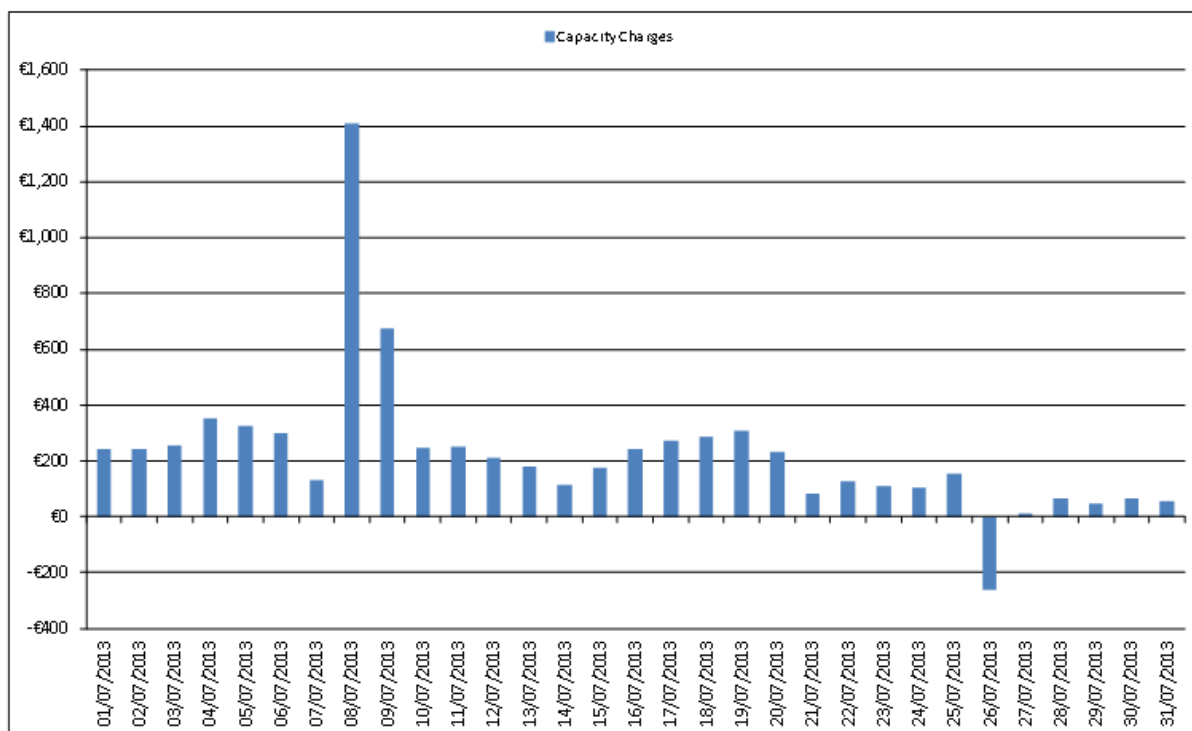


Figure 14 - Independent Suppliers Monetary Changes for Capacity Resettlement – July 2013

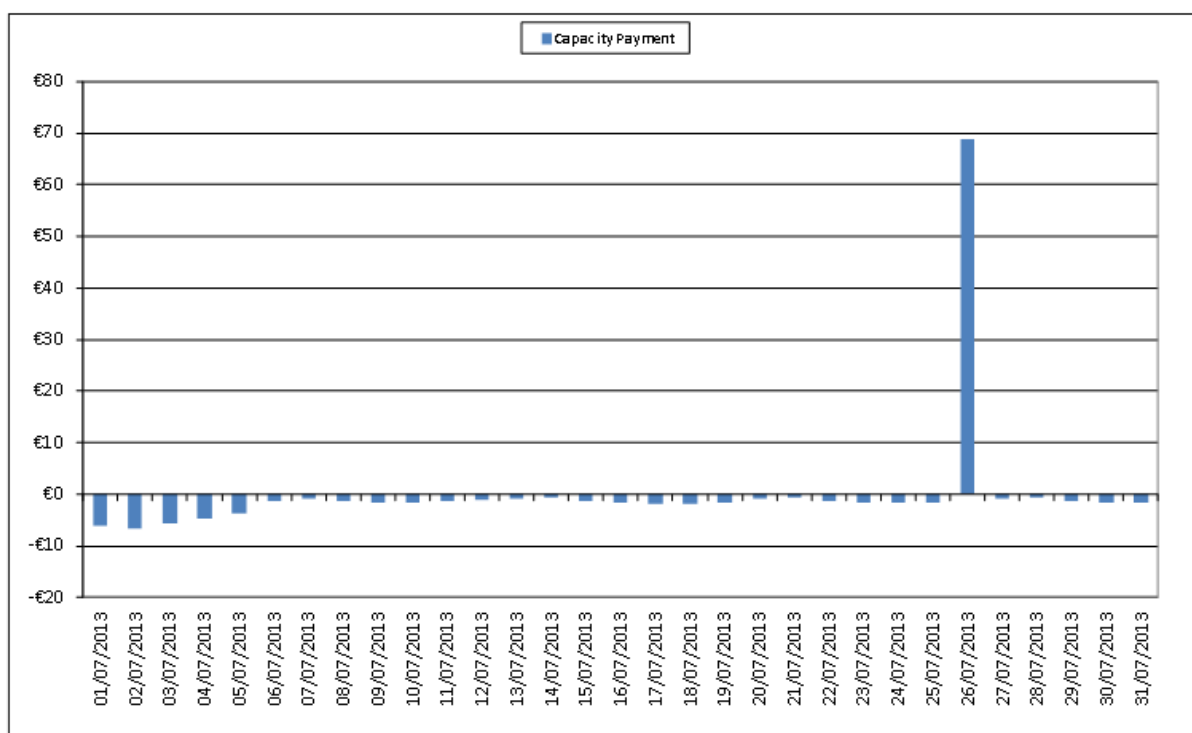


Figure 15 - All Generation Monetary Change for Capacity Resettlement – July 2013

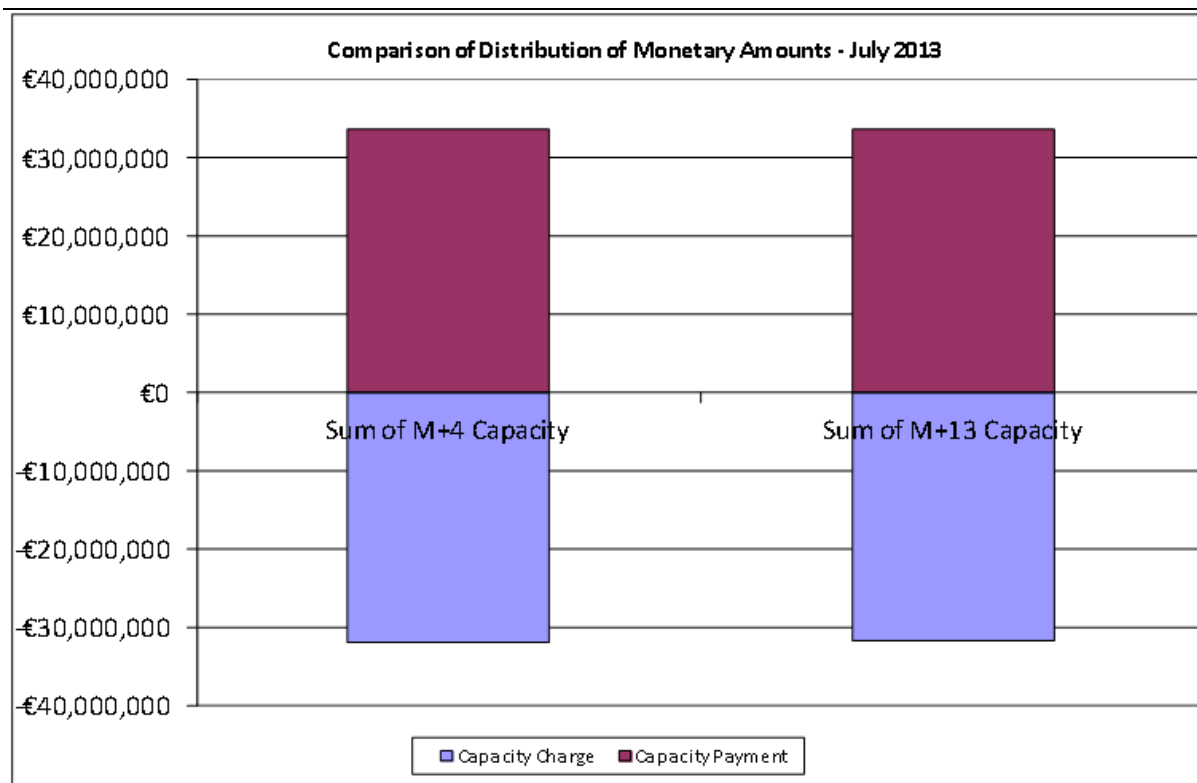


Figure 16 - Comparison of Distribution of Monetary Amounts between M+4 Capacity Resettlement and M+13 Capacity Resettlement – July 2013

The above graph demonstrates despite all the individual changes to payment and charge amounts on a Supplier or Generator Unit basis, the overall Capacity Market resettlement Charge and Payment amounts have not changed due to resettlement.

4 Helpdesk Call Statistics

The statistics presented in Table 10 - Helpdesk Call Statistics covers the month of August 2014.

	Received	Resolved within the period	Not Resolved	Resolved in the period	Resolution Time (Working Days)	Resolved On Time
Normal	141	120	21	135	2.97	117
Important	1	1	0	1	0.15	1
Urgent	3	3	0	3	1.20	2
Settlement	10	7	3	12	7.49	11
Credit	0	0	0	0	0.00	0
Dispute	0	0	0	1	29.89	0
Data	0	0	0	0	0.00	0
Total/Average	155	131	24	152	8.34	131

Table 10 – Helpdesk Statistics

Definitions:

- *Resolved within the Period* refers to queries raised and resolved within the calendar month of August 2014.
- *Resolved in the Period* refers to queries resolved within August 2014, and includes queries raised before this time.
- *Resolution Time (Working Days)* refers to average time to resolve, in working days, for this category of query. It is calculated based on all queries for the category, not just August 2014.
- *Not Resolved* refers to queries raised but not resolved within August 2014.
- *Urgent* are general queries which may have an impact on market operations. SEMO has an internal objective to resolve these within 3 working days; however, this is not mandated service level under the Trading & Settlement Code.
- *Disputes* are where a dispute has been raised over the outcome of a data or settlement query.

The average resolution time for General Queries has increased by 1.2 working days in August from 1.71 working days in July to 2.91 working days in August. SEMO has a metric to resolve General Queries within 20 Working Days. These include queries received over the phone and e-mail. There were no queries logged in August 2014 that took over 20 working days to resolve.

Data and Settlement Queries generally continue to be responded to within the timelines required by the Code, i.e. one calendar month. No Formal Query timeline extensions were required during August 2014 with regard to formal Settlement Queries.

5 Disputes and Queries

List of Disputes by Topic

As of 9th September there is one outstanding Dispute.

Dispute	Raised	Resolved
F0059635	2014-07-18	-

Table 11 – List of Disputes

List of Queries by Topic

5.1.1 Data Queries

There was one formal Data Query raised during the month of August 2014.

Topic	Number Of Queries
n/a	0

Table 12 – Upheld Data Queries by topic

- One Data Query in relation to Loss Factors was not upheld; queries regarding Transmission Loss Adjustment Factors (TLAFs) cannot be raised as Data Queries, query to be resubmitted as a Settlement Query.

5.1.2 Settlement Queries

There were ten Settlement Queries raised in August 2014. Of the ten, seven were upheld, two queries were not upheld and one query is still open. As at 9th September 2014 there is only one open Settlement Query.

Topic	Number Of Queries
Metering	2
Dispatch Instructions	2
Testing Charges	1
Availability	4
So-So trades	1

Table 13 – Upheld Settlement Queries by topic

- Two queries relating to Metering were raised. One was not upheld, and one is still open as at 9th September, 2014.
- Two queries in relation to Dispatch Instructions were raised. One is upheld and has been deemed to be of low materiality and will be corrected during the next scheduled Resettlement which is M+4. The other query was not upheld.
- One query relating to Testing Charges was not upheld.

Market Operator Monthly Report

- Four queries in relation to Availabilities were raised and upheld. Two were deemed to be of low materiality; one will be corrected during the next scheduled Resettlement which is M+4, and the other on Initial Capacity Settlement. One had no material impact. The other was in relation to a Dispute that has been resolved; but due to an operational error, disputed data was picked up at M+13.
- One query in relation to SO-SO trades was upheld. It was deemed to be of low materiality, and will be corrected during the next scheduled Resettlement which is M+4.

Unresolved Queries

There is one unresolved Settlement Query as at 9th September, 2014.

A full list of all the Data and Settlement queries raised is contained in [Appendix B](#).

6 Central Systems

Proportion of Default Data Used

On review of the Commercial Offer Data used in the MSP runs, 72.97% of data used was submitted by Participants through the normal Bid-Offer process. 27.03% of the data used was based on Standing Commercial Offer Data. 0% of the data used was based on adjusted offer data. None of the data used was based on Default Commercial Offer Data (Default differs from Standing in that it is based on the initial Default data submitted during registration process and not on more recent Standing Data submitted by the Participant through the Market Participant Interface). Details by unit are provided in [Appendix F](#).

Proportion of Estimated Meter Data used in Initial Settlement and Resettlement

This is not calculable presently.

List of System Errors and Re-runs

6.1.1 Re-Pricing and Resettlement Runs

There were no Re-Price runs carried out in August 2014.

There were no Resettlement runs carried out in August 2014.

6.1.2 System Errors

There were no defects identified in August 2014 that required Resettlement. There were no system defects identified in August 2014 that required re-pricing.

Details are provided in [Appendix C](#): List of All System Errors and Failures.

Market Operator Monthly Report

6.2 Operational Timings

This section lists the operation timings of MSP software runs and Settlement runs.

There are five run types for MSP software,

- Ex-Ante 1 Indicative, run on Trading Day – 1 calendar day,
- Ex-Ante 2 Indicative, run on Trading Day – 1 calendar day,
- With In Day 1 Indicative, run on Trading Day,
- Ex-Post Indicative, run on Trading Day + 1 calendar day, and
- Ex-Post Initial, run on Trading Day + 4 calendar days.

The following tables and graphs provide details for the postings of the MSP for July 2014.

6.2.1 MSP Postings August 2014

Process	On Time	< 1 hr late	> 1 hr late	Not done
Gate Close EA	30-31	1-31	0-31	0
Post EA1	31-31	0-31	0-31	0
Post EA2	31-31	0-31	0-31	0
Post WD1	31-31	0-31	0-31	0
Post EP1	31-31	0-31	0-31	0
Post EP2	31-31	0-31	0-31	0

Table 14 - Operational Timings

Process	On Time	< 1 hr late	> 1 hr late	Not done
Gate Close	97%	3%	0%	0%
Post EA1	100%	0%	0%	0%
Post EA2	100%	0%	0%	0%
Post WD1	100%	0%	0%	0%
Post EP1	100%	0%	0%	0%
Post EP2	100%	0%	0%	0%

Table 15 - Operational Timings (% on time)

Market Operator Monthly Report

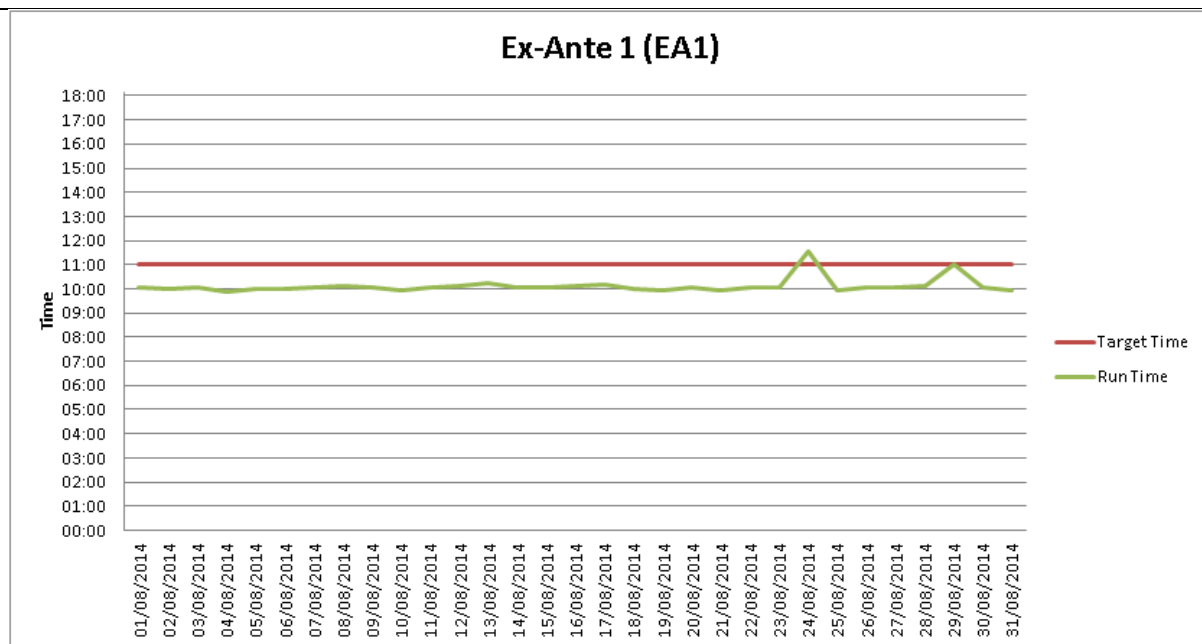


Figure 17 – Ex-Ante 1

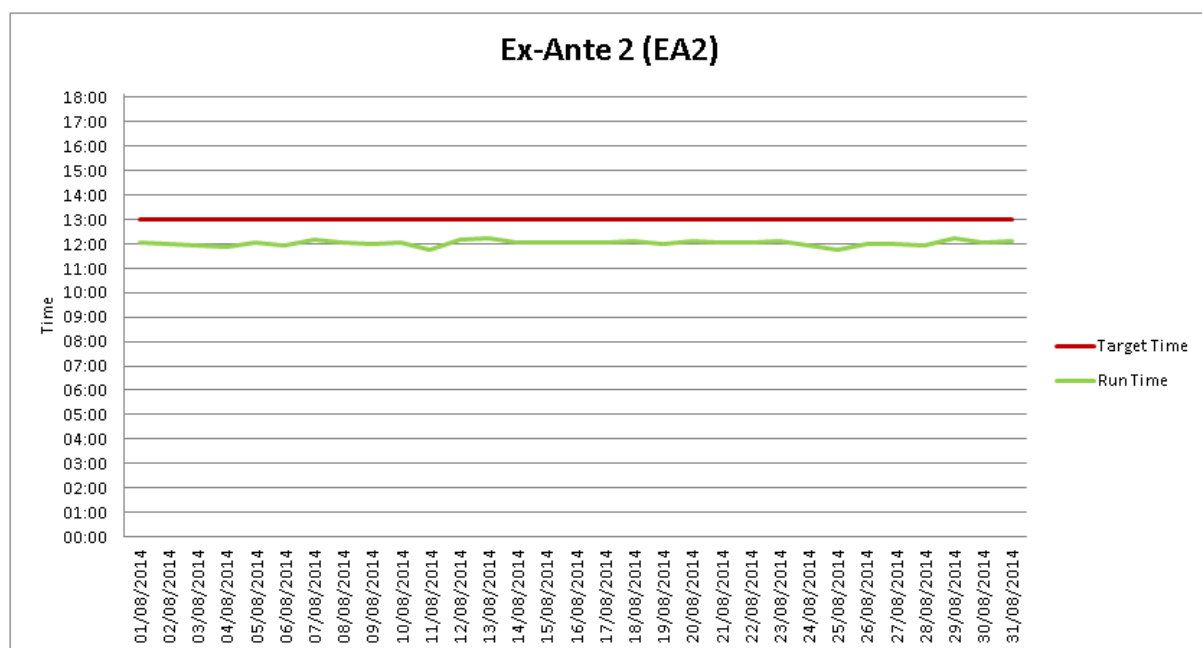


Figure 18 – Ex-Ante 2

Market Operator Monthly Report

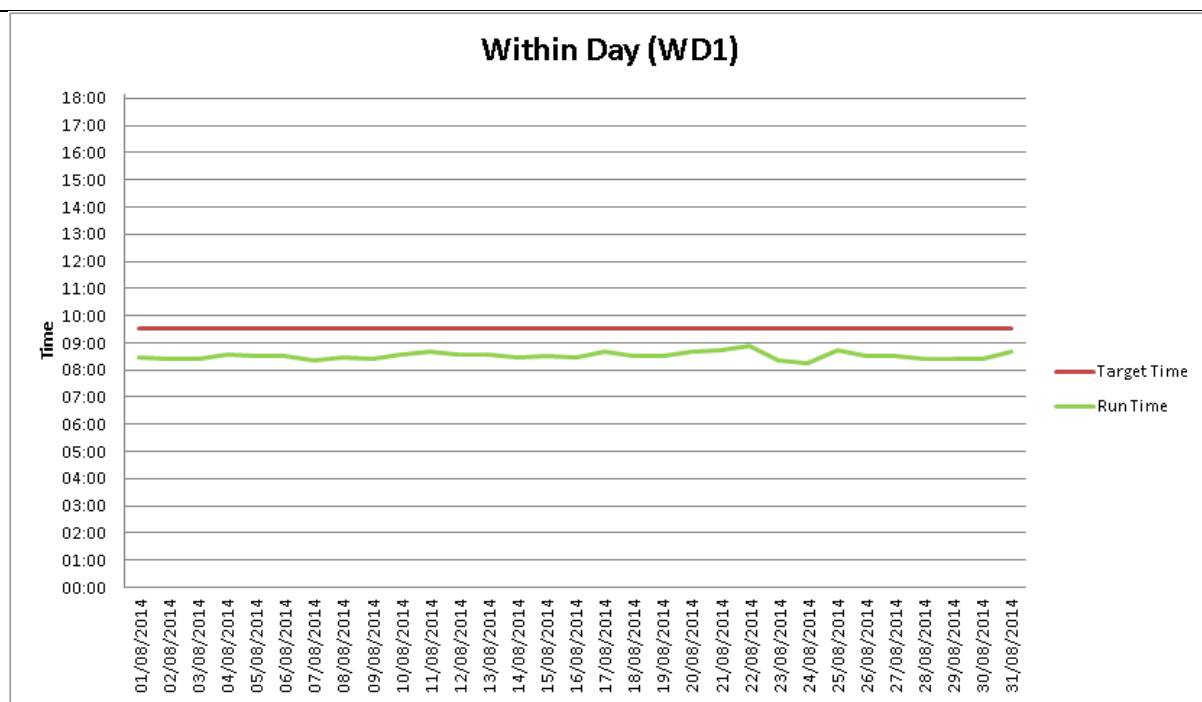


Figure 19 – Within Day 1

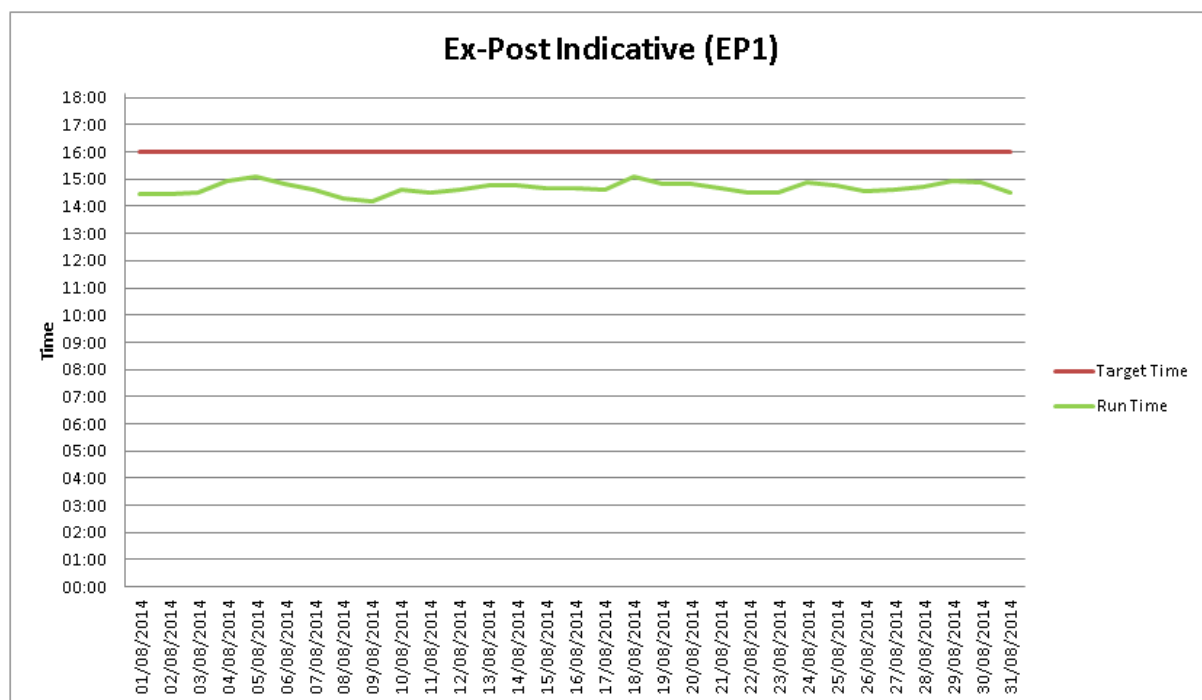


Figure 20 - Ex-Post Indicative

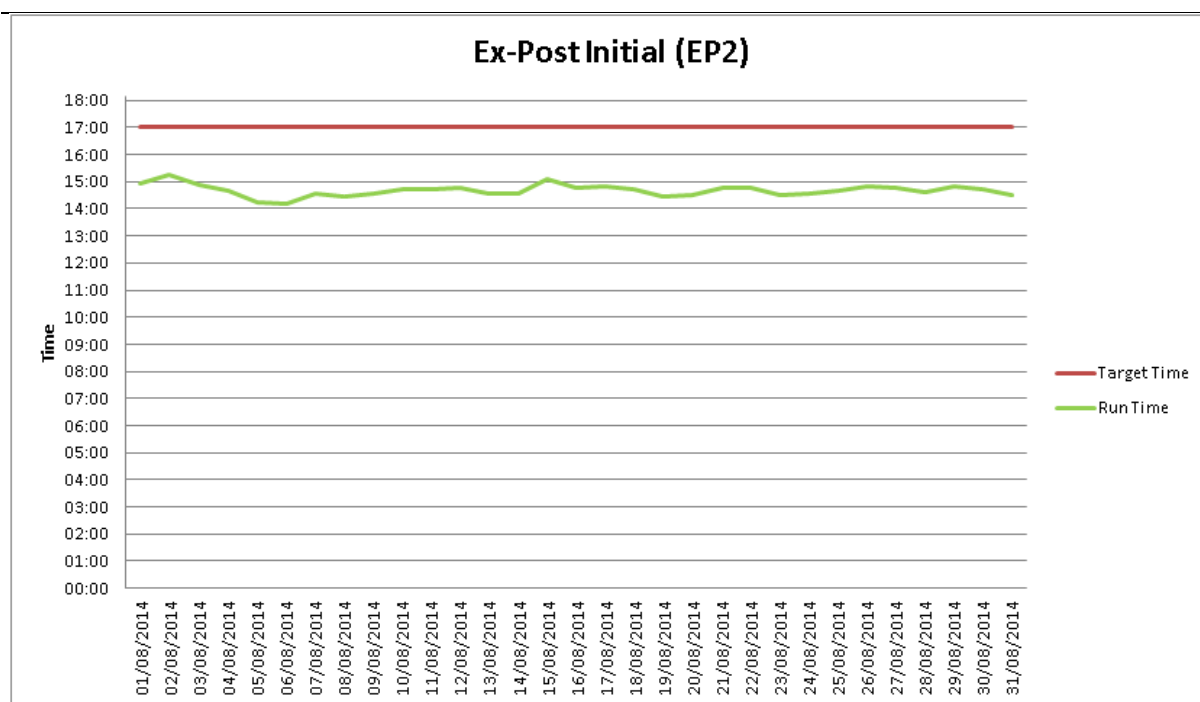


Figure 21 - Ex-Post Initial

Details of the operational timings of the Market System and Price (MSP) runs and Gate Closure are provided in [Appendix D](#).

6.2.2 MSP Algorithms

The Market Operator has two different certified solvers used to determine Unit Commitment. These solvers use the Lagrangian Relaxation (LR) and Mixed Integer Programming (MIP) methodologies.

The primary solver used in the SEM is Lagrangian Relaxation (LR). Under certain schedule outcomes where a significant pricing event is observed, the MSP software is re-run using the Mixed Integer Programming (MIP) solver. The outcomes of the two solvers are compared. Where solution determined using the MIP solver provides a better overall solution, this solution may be selected for publishing. An updated policy document on the use of MIP has been published and is available on the SEMO website [here](#).

In August 2014, there were three instances of publishing with the MIP solver.

A detail of historical runs and dates where the MIP algorithm has been used for published results is provided in [Appendix I](#).

6.2.3 Settlement Postings August 2014

The publication timings for Settlement runs are provided below.

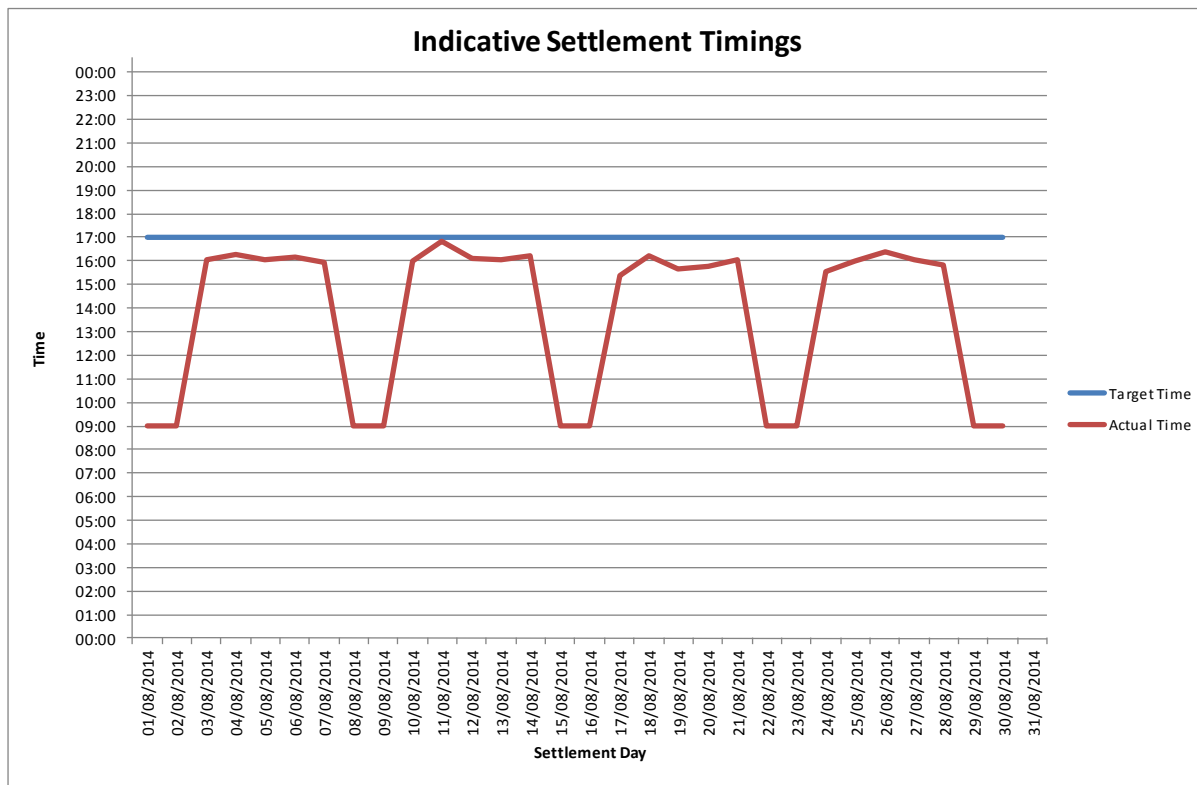


Figure 22 - Indicative Settlement Postings

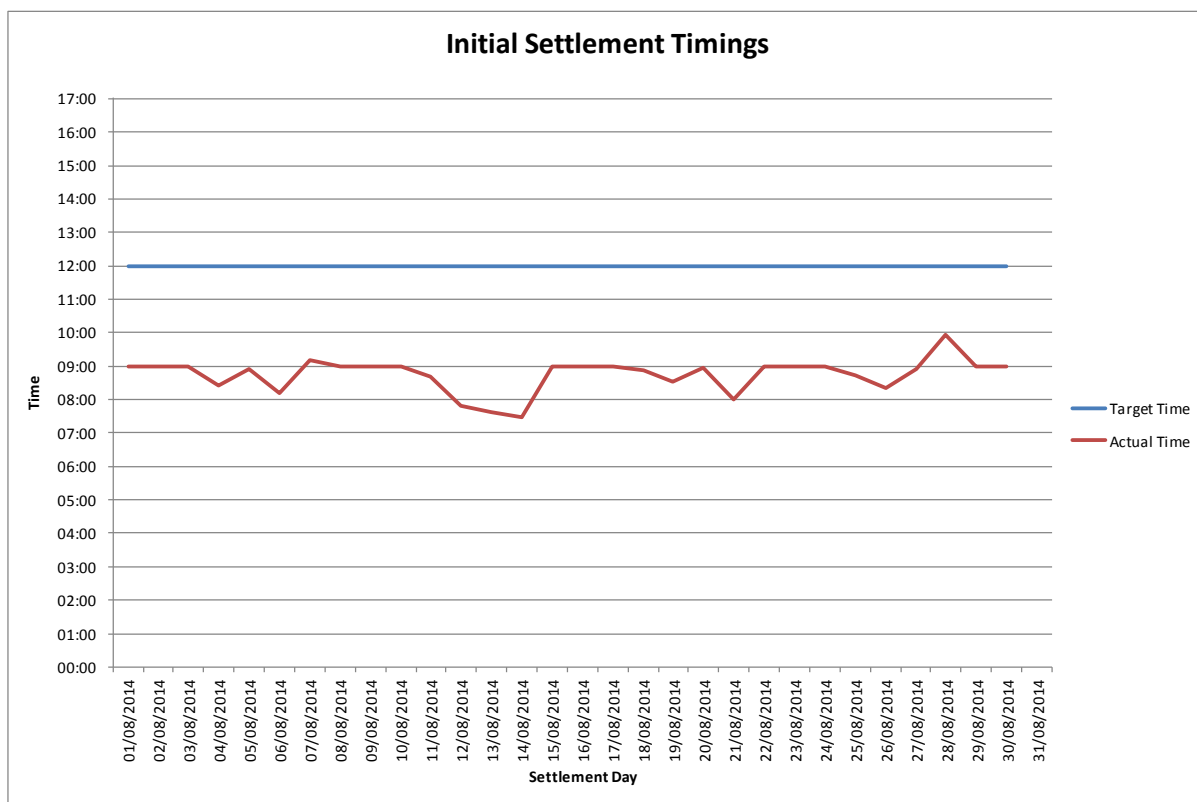


Figure 23 - Initial Settlement Postings

Further details of any delays noted above are provided in [Appendix A](#)

6.5 Market System Releases

6.5.1 Release SEM R2.5.0 (Proposed Deployment: November 14th, 2014)

Approval for the proposed scope for this release was received from the Regulatory Authorities on May 1st, 2014. The High Level Impact Assessment (HLIA) was published to the industry on May 7th, 2014.

The approved scope for this release is as follows:

CR Ref.	System	Description
SEM_PC_CR322	STL	Eligible Availability for Energy Limited Units Under Test
SEM_PC_CR327	MI	Event Queuing
SEM_PC_CR333	STL	Functionality to apply PUGDOG, TTariff on a Trading Day basis
SEM_PC_CR332	STL	Issue Zero Invoices
SEM_PC_CR330	MI	Changes to IART Report
SEM_PC_CR336	STL	HMRC VAT Change

The software was delivered by our vendors on July 31st.

System Integration test started as scheduled and will run from August 5th to October 10th.

There will be a brief phase of Market Test which is scheduled to commence on October 13th and conclude on October 24th.

The software is scheduled for deployment to our Production systems on Friday, November 14th 2014, subject to successful completion of all testing.

6.5.2 Release SEM R2.6.0 (Proposed Deployment: April 2015)

The release cut-off date for the SEM R2.6.0 release to the Central Market Systems is: **Friday, September 5th, 2014.**

7 Occasional Components

7.1 Disaster Recovery/Business Continuity Tests

There was no Business Continuity Tests performed during August 2014.

7.2 Administered Settlement

There was no requirement to run Administered Settlement during August 2014.

7.3 Communications or Systems Failures

There were a number of Market Interface System issues during August 2014;

Market Operations reported that the wind feed file from EirGrid TSO was not received into the Central Market Systems (CMS). EirGrid IS on-call was contacted, and indicated that it was an issue on the CMS side. The CMS were checked and verified that all interfaces were up and running and that other TSO feeds had been received successfully. – After further contact with EirGrid IS on-call a problem with the TSO CapeClear system was discovered.

Internal SEMO users of Dubcitrix were briefly affected when one of the Citrix servers rebooted; this caused any users connected to the server to lose their connection. Further investigation into the issue did not discover a root cause.

Market Operations reported a problem when trying to start-up a workflow. On investigation a problem was discovered with the Tomcat service. A restart of Tomcat addressed the issue. No obvious reason could be identified so a call was logged with the vendor ABB.

The wind load forecast file from SONI TSO was not received into the CMS. The CMS were checked and verified that all interfaces were up and running; no issue was discovered. Issue was with the TSO file.

An issue with the Belfast external web server was discovered by the SEM monitoring system; the web server stopped responding to connection requests. A restart of the key services on the server addressed the issue. At all times the Dublin external web server was accepting connection requests.

7.4 Denial of Service Attacks

There was no Denial of Service Attacks during August 2014.

7.5 Submission of Parameters to RAs for Approval

The following reports were issued to the Regulatory Authorities on 29th August 2014:

MSP Software Penalty Costs Parameters 2015 report proposing parameters for:

- Over Generation MSP Constraint Cost
- Under Generation MSP Constraint Cost
- Aggregate Interconnector Ramp Rate MSP Constraint
- Energy Limit MSP Constraint Cost
- Tie-Breaking Adder
- Maximum Export Available Transfer Capacity MSP Constraint Cost
- Maximum Import Available Transfer Capacity MSP Constraint Cost

SEM Parameters for the Determination of Required Credit Cover report 2015 proposing values for:

- Historical Assessment Period for Billing Period
- Historical Assessment Period for Capacity Period
- Analysis Percentile Parameter
- Credit Cover Adjustment Trigger
- Fixed Credit Requirement

8 Appendix A: Detail of Code Breaches

Market Participant

07/08/2014	Money In	Timing	Participant	Payment Default	PT_400081 Crystal Energy Supply Limited defaulted on a Week 29 2014 Initial + Week 13 2014 M+4 + Week 26 2013 M+13.	Participant Error	A default notice was issued to the participant.	Major
18/08/2014	Money In	Timing	Participant	Payment Default	Dan Twomey Waterpower Engineering Limited PT_400045 defaulted on an Initial FMOC invoice for July 2014.	Participant Error	A default notice was issued to the participant.	Major
18/08/2014	Money In	Timing	Participant	Payment Default	Contour Global Solutions (NI) Limited PT_500048 defaulted on an Initial FMOC invoice for July 2014.	Participant Error	A default notice was issued to the participant.	Major

Table 16 - Code Breaches – Market Participants

Data Provider

02/08/2014	EA1	Timing	EirGrid TSO	Operational	The EirGrid Load Forecast file for EA1 Trading Day 03/08/2014 was not received by 09:30	EirGrid were having issues with submitting data feeds.	The file was successfully received at 09:33 for Trading Day 03/08/2014	Minor
23/08/2014	EA1	Timing	EirGrid TSO	File Submission	The Ex-Ante 1 Market Schedule was published after the 11:00 deadline at 11:31.	EirGrid Wind Forecast was not received until 11:22.	Wind Forecast was manually uploaded and the Ex-Ante 1 Market Schedule was published at 11:31.	Minor
27/08/2014	EA1	n/a	EWIC IA	File Submission	Incorrect NTC file was provided by the IA for EA1 trade date 28/08/2014	The EWIC outage had been pushed back to 12 noon on the 28th however the NTC still had non zero values from 6am – 12 pm on 28th.	Corrected NTC file was submitted and MIUN file was published.	Minor
28/08/2014	WD1	Quality	EWIC IA	File Submission	MIUNs for WD1 TD 28/08/2014 revised & set to zero.	Incorrect NTC file received on the 27/08/2014 from the IA.	A zero file was uploaded to the MPI @ 09:18. Zero MIUNs published before the 09:30 deadline.	Minor
28/08/2014	EA2	Quality	EWIC IA	File Submission	Incorrect NTC file was provided by the IA for EA2 trade date 28/08/2014	The EWIC outage had been pushed back to 12 noon on the 28th however the NTC still had non zero values from 6am – 12 pm on 28th.	Corrected NTC file was submitted and MIUN file was published.	Minor
29/08/2014	M+13 CAP Invoicing; M+13 CAP Statements	Timing	EirGrid MDP	Operational	M+13 Capacity Invoicing for July 2013 due to be published on 29/08/2014 were postponed by one week.	Operational Error.	M+13 Capacity Statements and Reports was re-published on 03/09/2014 and Invoices were published on 05/09/2014.	Major

Table 17 - Code Breaches – Data Providers

SEMO - Pricing and Scheduling

There were no issues to report in August 2014

SEMO – Settlements

There were no issues to report in August 2014

SEMO - Funds Transfer

There were no issues to report in August 2014

SEMO - Credit Management

There were no issues to report in August 2014

SEMO – Other

There were no issues to report in August 2014

9 Appendix B: List of Queries by Type

Data Queries

Summary Title	Description	ID	Logged On	Date sent to MP
TLAF	GU_400272 (Moneypoint Unit 3). TLAF Query. There is a difference in the TLAF values between Market Operator and our system. The file sent in for 2nd September has a TLAF value of 0.988 for MP3 which differs to our 1.001. This value has not changed since June 2014. There are a number of units effected by this problem.	PT_400030	2014-09-04	2014-09-04

Table 18 - Data Queries

Settlement Queries

Summary Title	Description	ID	Logged On	Date sent to MP
Availability	Incorrect Availability Declarations were sent to the SEM for DSU_401400 (Electricity Exchange Unit 1) for the 24/07/2014.	TSO_EirGrid	2014-08-07	2014-08-08
Availability	Incorrect Availability Declarations were sent to the SEM for GU_400363 (Turlough Hill Unit 4) for the 17/07/2014.	TSO_EirGrid	2014-08-19	
Availability	Incorrect ACTAs were sent to the SEM on D+3 for DSU_401270 (Activation Energy Unit 1) on the 13/08/2014. The MAX_AVAIL_MW for DSU_401270 (Activation Energy Unit 1) should have been 78MW at 09:02 on the 13/08/2014 (and not 68MW).	TSO_EirGrid	2014-08-22	2014-08-29
Availability	Incorrect Availabilities for Cushaling PT_400078 for the period 1st to 19th July 2013. Original Query F0054550	PT_400078	2014-08-29	2014-09-02
Dispatch instructions	The disptach profile for this unit on the 3rd does appear to reflect all of the dispatch instructions issued for the unit for this date resulting in uninstructed imbalance charges for the unit.	PT_400030	2014-08-13	2014-08-19
Dispatch instructions	Incorrect DIs were sent to the SEM on D+3 for GU_400363 (Turlough Hill Unit 4) on the 01/08/2014. GU_400363 (Turlough Hill Unit 4) should have been dispatched to 5MW at 14:02 on the 01/08/2014.	TSO_Eirgrid	2014-08-22	2014-08-28
Availability	Incorrect Availability Declarations were sent to the SEM for DSU_401400 (Electricity Exchange Unit 1) for the 24/07/2014.	TSO_EirGrid	2014-08-07	2014-08-08

Market Operator Monthly Report

SO-SO Trade	Incorrect costs provided to SEMO for EWIC SO Trades for 02.07.2014 and 06.07.2014. Trade costs which were submitted to SEMO at D+3 were incorrect. The amended costs per trade date are included with this query.	IA_ROIEWIC	2014-08-27	2014-08-27
Metering	On the initial run for unit gu401180 for the period 9th to 12th April the unit was despatched and the market data has metered generation data for this unit. On the re run statement at month plus 4 no metered generation is recorded against the unit resulting in a re settlement of Energy payments for the period. Could you please review and advise.	PT_400086	2014-08-14	2014-08-27
Metering	Incorrect Meter Data for PT_500056	PT_500056	2014-08-29	2014-08-06
Testing Charge	The testing charge applied in this invoice (1000145871) differs to that calculated by Tynagh Energy Limited - as per supporting documentation. From 00:00 on 14th August to 00:00 on 16th August. Total metered gen x testing tariff does not equal invoiced amount. Supporting documentation - Testing Charge Calculation - Tynagh 14th & 15th August 2014.xlsx	PT_400041	2014-08-25	2014-08-26

Table 19 - Settlement Queries

10 Appendix C: List of All System Errors and Failures

The definitions of the statuses used for the List of All System Errors and Failures are:

- In Progress: Fix being identified and implemented.
- Resolved: Fix has been implemented, but reruns have not been performed.
- Closed: Required reruns have been performed and error-failure has been completely rectified.

Note: Items in the List of All System Errors and Failures that have status 'Closed' in this months report will not appear in subsequent Monthly Market Operator Reports as they are no longer open issues.

Issue No.	Description	Effect	Fixed from	Re-Pricing	Resettlement	Status
-	There were no system defects identified in August 2014 that required repricing or resettlement	-	-	-	-	-

Table 20 - List of System Errors and Failures

11 Appendix D: Details of Operational Timings

Market Schedule and Price Runs

Operational Day	EA1 Postings		EA2 Postings		WD1 Postings		EP1 Postings		EP2 Postings	
	Target	Actual	Target	Actual	Target	Actual	Target	Actual	Target	Actual
01/08/2014	11:00	10:02:00	13:00	12:02	09:30	08:28	16:00	14:27	17:00	14:55
02/08/2014	11:00	10:01:00	13:00	12:01	09:30	08:26	16:00	14:28	17:00	15:14
03/08/2014	11:00	10:03:00	13:00	11:56	09:30	08:23	16:00	14:31	17:00	14:54
04/08/2014	11:00	09:52:00	13:00	11:52	09:30	08:33	16:00	14:55	17:00	14:40
05/08/2014	11:00	10:01:00	13:00	12:03	09:30	08:30	16:00	15:07	17:00	14:14
06/08/2014	11:00	09:59:00	13:00	11:57	09:30	08:32	16:00	14:51	17:00	14:10
07/08/2014	11:00	10:04:00	13:00	12:09	09:30	08:21	16:00	14:38	17:00	14:34
08/08/2014	11:00	10:08:00	13:00	12:03	09:30	08:29	16:00	14:18	17:00	14:28
09/08/2014	11:00	10:02:00	13:00	11:59	09:30	08:25	16:00	14:12	17:00	14:35
10/08/2014	11:00	09:56:00	13:00	12:03	09:30	08:33	16:00	14:37	17:00	14:44
11/08/2014	11:00	10:05:00	13:00	11:44	09:30	08:40	16:00	14:30	17:00	14:42
12/08/2014	11:00	10:07:00	13:00	12:11	09:30	08:33	16:00	14:37	17:00	14:45
13/08/2014	11:00	10:15:00	13:00	12:13	09:30	08:35	16:00	14:46	17:00	14:35
14/08/2014	11:00	10:02:00	13:00	12:03	09:30	08:28	16:00	14:45	17:00	14:34
15/08/2014	11:00	10:02:00	13:00	12:04	09:30	08:32	16:00	14:41	17:00	15:06
16/08/2014	11:00	10:06:00	13:00	12:04	09:30	08:28	16:00	14:39	17:00	14:48
17/08/2014	11:00	10:09:00	13:00	12:04	09:30	08:40	16:00	14:36	17:00	14:50
18/08/2014	11:00	10:01:00	13:00	12:07	09:30	08:30	16:00	15:06	17:00	14:43
19/08/2014	11:00	09:55:00	13:00	12:00	09:30	08:30	16:00	14:50	17:00	14:28
20/08/2014	11:00	10:02:00	13:00	12:07	09:30	08:41	16:00	14:51	17:00	14:29
21/08/2014	11:00	09:57:00	13:00	12:02	09:30	08:45	16:00	14:41	17:00	14:48
22/08/2014	11:00	10:02:00	13:00	12:03	09:30	08:53	16:00	14:30	17:00	14:46
23/08/2014	11:00	10:03:00	13:00	12:06	09:30	08:20	16:00	14:32	17:00	14:30
24/08/2014	11:00	11:33:00	13:00	00:00	09:30	08:16	16:00	14:52	17:00	14:34
25/08/2014	11:00	09:58:00	13:00	11:47	09:30	08:43	16:00	14:48	17:00	14:40
26/08/2014	11:00	10:05:00	13:00	12:01	09:30	08:31	16:00	14:34	17:00	14:50
27/08/2014	11:00	10:02:00	13:00	12:01	09:30	08:30	16:00	14:37	17:00	14:45
28/08/2014	11:00	10:08:00	13:00	11:57	09:30	08:23	16:00	14:42	17:00	14:38
29/08/2014	11:00	11:01:00	13:00	12:13	09:30	08:24	16:00	14:55	17:00	14:49
30/08/2014	11:00	10:04:00	13:00	12:02	09:30	08:25	16:00	14:53	17:00	14:42
31/08/2014	11:00	09:55:00	13:00	12:08	09:30	08:42	16:00	14:31	17:00	14:31

Table 21 – MSP Runs

Market Operator Monthly Report

Settlement Runs

Trading Day	INDICATIVE				INITIAL			
	Target Date	Actual Date	Target Time	Actual Time	Trading Day	Actual Date	Target Time	Actual Time
01/08/2014	04/08/2014	04/08/2014	17:00	09:00	01/08/2014	08/08/2014	12:00	09:00
02/08/2014	04/08/2014	04/08/2014	17:00	09:00	02/08/2014	08/08/2014	12:00	09:00
03/08/2014	04/08/2014	04/08/2014	17:00	16:03	03/08/2014	08/08/2014	12:00	09:00
04/08/2014	05/08/2014	05/08/2014	17:00	16:17	04/08/2014	11/08/2014	12:00	08:25
05/08/2014	06/08/2014	06/08/2014	17:00	16:03	05/08/2014	12/08/2014	12:00	08:55
06/08/2014	07/08/2014	07/08/2014	17:00	16:09	06/08/2014	13/08/2014	12:00	08:11
07/08/2014	08/08/2014	08/08/2014	17:00	15:57	07/08/2014	14/08/2014	12:00	09:11
08/08/2014	11/08/2014	11/08/2014	17:00	09:00	08/08/2014	15/08/2014	12:00	09:00
09/08/2014	11/08/2014	11/08/2014	17:00	09:00	09/08/2014	15/08/2014	12:00	09:00
10/08/2014	11/08/2014	11/08/2014	17:00	15:58	10/08/2014	15/08/2014	12:00	09:00
11/08/2014	12/08/2014	12/08/2014	17:00	16:49	11/08/2014	18/08/2014	12:00	08:42
12/08/2014	13/08/2014	13/08/2014	17:00	16:07	12/08/2014	19/08/2014	12:00	07:48
13/08/2014	14/08/2014	14/08/2014	17:00	16:03	13/08/2014	20/08/2014	12:00	07:37
14/08/2014	15/08/2014	15/08/2014	17:00	16:12	14/08/2014	21/08/2014	12:00	07:28
15/08/2014	18/08/2014	18/08/2014	17:00	09:00	15/08/2014	22/08/2014	12:00	09:00
16/08/2014	18/08/2014	18/08/2014	17:00	09:00	16/08/2014	22/08/2014	12:00	09:00
17/08/2014	18/08/2014	18/08/2014	17:00	15:24	17/08/2014	22/08/2014	12:00	09:00
18/08/2014	19/08/2014	19/08/2014	17:00	16:12	18/08/2014	26/08/2014	12:00	08:53
19/08/2014	20/08/2014	20/08/2014	17:00	15:39	19/08/2014	26/08/2014	12:00	08:32
20/08/2014	21/08/2014	21/08/2014	17:00	15:45	20/08/2014	27/08/2014	12:00	08:58
21/08/2014	22/08/2014	22/08/2014	17:00	16:02	21/08/2014	28/08/2014	12:00	08:00
22/08/2014	25/08/2014	25/08/2014	17:00	09:00	22/08/2014	29/08/2014	12:00	09:00
23/08/2014	25/08/2014	25/08/2014	17:00	09:00	23/08/2014	29/08/2014	12:00	09:00
24/08/2014	25/08/2014	25/08/2014	17:00	15:34	24/08/2014	29/08/2014	12:00	09:00
25/08/2014	26/08/2014	26/08/2014	17:00	16:00	25/08/2014	01/09/2014	12:00	08:44
26/08/2014	27/08/2014	27/08/2014	17:00	16:22	26/08/2014	02/09/2014	12:00	08:20
27/08/2014	28/08/2014	28/08/2014	17:00	16:02	27/08/2014	03/09/2014	12:00	08:54
28/08/2014	29/08/2014	29/08/2014	17:00	15:50	28/08/2014	04/09/2014	12:00	09:57
29/08/2014	01/09/2014	01/09/2014	17:00	09:00	29/08/2014	05/09/2014	12:00	09:00
30/08/2014	01/09/2014	01/09/2014	17:00	09:00	30/08/2014	05/09/2014	12:00	09:00
31/08/2014	01/09/2014	01/09/2014	17:00	16:13	31/08/2014	05/09/2014	12:00	09:00

Table 22 - Settlement Runs

12 Appendix E: Imperfections Charge

This appendix provides daily data for the Constraint Payments, Uninstructed Imbalance Payments and Imperfections Charges, and as well as the weekly values of Make Whole Payments and Testing Charges.

The following table is updated to take account of the values calculated in the Initial Settlement runs only.

Historical information will be shown in Appendix E until completion of the current financial year. Information prior to that can be found in previous Monthly Market Operator Reports.

Date	Constraints Payments	Uninstructed Imbalances Payments	Imperfections Charges
01/01/2014	€955,074.54	€15,701.02	-€363,523.63
02/01/2014	€869,584.76	-€51,270.96	-€411,223.19
03/01/2014	€981,299.90	-€6,763.65	-€416,729.57
04/01/2014	€842,597.58	-€984.25	-€406,468.19
05/01/2014	€1,017,892.87	-€3,304.71	-€374,451.32
06/01/2014	€1,027,467.78	€69,008.95	-€421,209.86
07/01/2014	€1,131,050.74	-€4,313.68	-€429,731.89
08/01/2014	€652,565.38	-€39,328.22	-€457,907.14
09/01/2014	€748,152.68	-€40,827.41	-€453,780.43
10/01/2014	€803,817.65	-€48,315.21	-€448,048.96
11/01/2014	€915,704.71	-€4,318.18	-€411,522.40
12/01/2014	€921,530.28	-€9,195.15	-€379,307.86
13/01/2014	€641,244.74	-€20,649.97	-€453,955.42
14/01/2014	€570,633.32	-€31,654.28	-€466,747.71
15/01/2014	€789,788.53	-€3,878.25	-€443,384.59
16/01/2014	€619,904.29	-€24,560.52	-€456,869.59
17/01/2014	€515,211.70	-€66,689.58	-€454,608.47
18/01/2014	€520,405.35	-€19,031.76	-€421,586.87
19/01/2014	€808,100.39	-€9,045.86	-€397,800.00
20/01/2014	€917,028.91	-€62,048.37	-€448,388.85
21/01/2014	€976,768.66	-€27,263.63	-€444,554.65
22/01/2014	€617,107.10	-€48,174.53	-€447,356.40
23/01/2014	€636,348.17	€11,856.06	-€449,699.08
24/01/2014	€858,787.11	-€3,889.75	-€436,805.26
25/01/2014	€867,668.14	€24,013.08	-€387,936.33
26/01/2014	€1,067,111.91	€8,950.68	-€369,381.21
27/01/2014	€667,942.56	-€16,961.92	-€434,460.28
28/01/2014	€857,567.91	-€2,690.66	-€447,652.80
29/01/2014	€700,070.05	-€18,250.06	-€461,431.27
30/01/2014	€686,455.61	-€5,466.72	-€462,829.04
31/01/2014	€777,271.35	€2,344.09	-€442,761.53
01/02/2014	€1,092,287.94	€46,296.79	-€399,482.81
02/02/2014	€1,040,876.64	-€7,906.04	-€372,329.72
03/02/2014	€814,552.07	-€23,152.17	-€442,954.07
04/02/2014	€765,620.92	-€4,186.12	-€446,429.95
05/02/2014	€619,745.34	-€24,997.27	-€447,492.36

Market Operator Monthly Report

06/02/2014	€570,059.13	-€14,226.00	-€454,172.29
07/02/2014	€733,072.53	-€5,600.31	-€442,576.92
08/02/2014	€1,126,907.52	€1,739.38	-€390,725.34
09/02/2014	€654,441.39	€49,019.47	-€374,840.33
10/02/2014	€769,918.90	-€26,132.58	-€448,629.96
11/02/2014	€743,530.15	€740.24	-€449,191.11
12/02/2014	€790,821.83	-€29,220.96	-€445,981.56
13/02/2014	€730,779.98	-€898.33	-€445,971.03
14/02/2014	€698,505.74	-€1,078.62	-€458,004.41
15/02/2014	€634,027.20	€15,043.38	-€395,023.34
16/02/2014	€566,490.77	-€9,244.53	-€388,347.11
17/02/2014	€650,193.75	-€11,780.63	-€447,842.88
18/02/2014	€546,435.98	-€32,788.64	-€454,115.28
19/02/2014	€661,463.66	€2,436.11	-€441,435.28
20/02/2014	€627,222.04	-€36,929.66	-€429,485.89
21/02/2014	€772,285.98	-€33,430.62	-€424,158.80
22/02/2014	€1,047,041.63	€15,965.37	-€384,643.79
23/02/2014	€647,688.10	€6,359.48	-€365,258.95
24/02/2014	€593,693.03	€32,810.10	-€427,977.07
25/02/2014	€673,092.66	€47,042.36	-€425,753.08
26/02/2014	€737,469.64	€33,371.98	-€427,771.92
27/02/2014	€599,427.86	€18,597.29	-€438,598.48
28/02/2014	€486,170.94	€35,027.71	-€436,398.07
01/03/2014	€551,273.11	€13,733.62	-€402,126.07
02/03/2014	€253,643.88	€21,061.91	-€380,791.02
03/03/2014	€838,469.31	€31,907.86	-€440,202.27
04/03/2014	€532,230.85	-€34,892.63	-€449,787.29
05/03/2014	€569,397.10	€23,555.80	-€438,585.32
06/03/2014	€627,047.33	€28,301.63	-€445,574.58
07/03/2014	€791,058.04	-€23,188.94	-€422,122.27
08/03/2014	€524,758.24	€10,428.20	-€373,550.80
09/03/2014	€757,796.75	-€45,810.91	-€384,189.33
10/03/2014	€554,422.76	-€50,527.70	-€435,033.51
11/03/2014	€490,320.26	-€80,176.23	-€441,302.05
12/03/2014	€474,930.61	-€50,381.14	-€448,528.36
13/03/2014	€535,105.11	-€90,832.92	-€452,732.25
14/03/2014	€750,264.06	-€16,885.72	-€425,233.91
15/03/2014	€565,699.81	€6,798.70	-€370,939.19
16/03/2014	€260,949.62	€8,107.37	-€352,376.53
17/03/2014	€564,851.76	€17,272.05	-€364,550.61
18/03/2014	€461,877.22	-€10,830.22	-€397,299.39
19/03/2014	€638,241.59	€2,103.82	-€404,183.93
20/03/2014	€366,615.71	-€20,983.02	-€414,658.34
21/03/2014	€596,761.02	-€1,539.05	-€422,392.61
22/03/2014	€421,180.67	€3,792.17	-€386,455.45
23/03/2014	€533,746.14	-€13,893.35	-€370,919.40
24/03/2014	€556,053.41	-€5,517.38	-€412,252.02
25/03/2014	€499,032.80	-€21,665.91	-€424,799.72
26/03/2014	€645,898.84	-€47,573.09	-€436,022.93
27/03/2014	€618,021.01	-€94,304.81	-€440,855.08

Market Operator Monthly Report

28/03/2014	€474,746.28	-€19,091.39	-€428,576.54
29/03/2014	€396,800.83	-€14,274.61	-€390,148.61
30/03/2014	€601,577.41	-€5,279.56	-€347,892.04
31/03/2014	€709,881.34	-€36,965.35	-€413,090.30
01/04/2014	€493,506.80	-€62,047.30	-€420,270.95
02/04/2014	€390,689.63	€1,285.10	-€416,199.09
03/04/2014	€805,100.52	-€7,736.37	-€419,384.63
04/04/2014	€480,942.40	-€9,391.04	-€410,276.35
05/04/2014	€437,083.55	€30.09	-€365,827.83
06/04/2014	€361,422.25	-€11,522.38	-€330,325.19
07/04/2014	€548,948.94	-€31,726.93	-€399,979.51
08/04/2014	€424,359.83	-€13,685.38	-€398,299.01
09/04/2014	€549,232.01	-€5,003.33	-€401,907.82
10/04/2014	€419,557.15	-€21,387.03	-€413,392.52
11/04/2014	€464,961.09	-€16,069.99	-€403,394.20
12/04/2014	€538,279.15	-€1,971.04	-€349,655.90
13/04/2014	€429,660.02	€4,249.05	-€337,368.15
14/04/2014	€173,425.17	-€19,212.43	-€398,627.50
15/04/2014	€409,386.74	-€5,372.55	-€388,585.54
16/04/2014	€387,544.85	-€8,738.90	-€391,905.20
17/04/2014	€353,527.14	-€21,038.69	-€393,877.38
18/04/2014	€406,743.60	-€11,653.05	-€383,249.86
19/04/2014	€326,411.09	€1,994.99	-€351,174.26
20/04/2014	€542,284.63	-€4,968.48	-€321,329.94
21/04/2014	€612,266.82	€2,530.54	-€311,006.56
22/04/2014	€507,354.80	-€13,928.47	-€373,861.21
23/04/2014	€468,135.27	-€29,267.76	-€380,271.71
24/04/2014	€406,217.05	-€12,686.25	-€386,511.77
25/04/2014	€522,164.29	€890.22	-€371,853.20
26/04/2014	€316,953.67	€8,739.69	-€338,460.42
27/04/2014	€434,994.12	-€842.19	-€338,502.78
28/04/2014	€471,489.47	-€34,016.83	-€395,652.40
29/04/2014	€367,047.29	-€4,206.25	-€395,371.12
30/04/2014	€366,195.91	-€27,414.20	-€393,628.42
01/05/2014	€246,053.16	-€19,877.85	-€403,408.92
02/05/2014	€164,891.37	-€16,241.91	-€394,309.86
03/05/2014	€313,454.83	-€6,018.51	-€355,317.37
04/05/2014	€430,617.78	€1,155.53	-€327,028.46
05/05/2014	€347,517.05	-€10,044.89	-€326,831.33
06/05/2014	€487,998.49	-€8,440.55	-€373,854.74
07/05/2014	€397,934.98	€2,071.56	-€379,285.51
08/05/2014	€592,137.89	€9,579.27	-€392,179.12
09/05/2014	€298,375.07	-€6,659.56	-€374,231.73
10/05/2014	€309,315.85	€11,549.56	-€342,295.24
11/05/2014	€349,749.11	-€5,463.16	-€325,086.80
12/05/2014	€166,271.11	-€239.14	-€385,574.87
13/05/2014	€279,317.38	-€5,163.93	-€392,422.70
14/05/2014	€237,720.41	-€23,285.90	-€403,609.34
15/05/2014	€222,011.67	-€24,282.91	-€398,967.77
16/05/2014	€233,415.69	-€3,024.00	-€377,298.82

Market Operator Monthly Report

17/05/2014	€308,186.07	-€6,138.88	-€332,321.56
18/05/2014	€234,907.17	€1,363.53	-€333,272.56
19/05/2014	€192,322.12	-€20,970.09	-€388,734.22
20/05/2014	€234,992.31	-€9,746.08	-€399,176.24
21/05/2014	€173,709.13	-€13,617.56	-€389,481.89
22/05/2014	€214,372.91	-€5,978.99	-€381,807.55
23/05/2014	€429,485.31	€104.55	-€368,448.27
24/05/2014	€120,386.81	€3,517.61	-€340,924.69
25/05/2014	€431,999.65	-€7,602.62	-€338,246.61
26/05/2014	€176,577.63	-€25,612.19	-€392,322.04
27/05/2014	€308,483.53	-€15,136.56	-€392,314.32
28/05/2014	€352,011.89	-€13,476.82	-€391,502.13
29/05/2014	€99,509.99	€11,099.11	-€395,064.51
30/05/2014	€255,905.57	€89.21	-€386,852.62
31/05/2014	€379,068.63	€152.04	-€343,634.28
01/06/2014	€261,003.12	€571.99	-€318,603.87
02/06/2014	€165,838.14	-€15,541.65	-€344,586.55
03/06/2014	€331,556.56	-€56,629.79	-€378,964.60
04/06/2014	€429,071.88	-€4,314.04	-€379,297.07
05/06/2014	€358,997.74	-€5,038.60	-€383,585.81
06/06/2014	€487,730.63	€2,802.43	-€360,546.63
07/06/2014	€220,520.47	-€751.79	-€336,252.03
08/06/2014	€361,149.72	€16,474.04	-€315,278.89
09/06/2014	€315,698.15	-€9,318.41	-€370,824.11
10/06/2014	€251,984.32	-€8,421.60	-€386,114.43
11/06/2014	€310,158.70	-€29,461.16	-€389,098.29
12/06/2014	€226,996.18	-€9,451.22	-€385,744.09
13/06/2014	€171,777.03	€2,805.23	-€389,471.04
14/06/2014	€188,321.32	-€5,152.64	-€349,441.32
15/06/2014	€149,192.87	-€2,456.74	-€324,494.04
16/06/2014	€256,838.15	-€3,466.28	-€370,984.94
17/06/2014	€189,683.98	-€661.51	-€388,732.17
18/06/2014	€548,711.45	€3,978.34	-€391,485.74
19/06/2014	€477,957.50	-€1,625.21	-€378,462.71
20/06/2014	€171,599.50	-€8,288.37	-€373,735.56
21/06/2014	€212,960.89	€2,244.01	-€335,411.92
22/06/2014	€344,462.96	-€1,044.99	-€323,495.35
23/06/2014	€214,222.79	-€4,890.90	-€376,348.18
24/06/2014	€323,543.08	-€13,536.72	-€389,182.42
25/06/2014	€312,334.26	-€3,592.78	-€393,119.37
26/06/2014	€357,703.94	-€71.89	-€380,628.72
27/06/2014	€259,711.86	-€1,302.11	-€374,028.78
28/06/2014	€223,536.38	€3,657.05	-€337,593.94
29/06/2014	€291,603.87	-€30,266.41	-€321,113.40
30/06/2014	€315,767.89	-€12,389.49	-€365,692.35
01/07/2014	€341,754.52	€4,505.16	-€380,516.77
02/07/2014	€230,371.72	€3,066.03	-€368,999.36
03/07/2014	€320,576.73	-€8,129.69	-€372,575.19
04/07/2014	€305,992.28	€22,482.93	-€366,743.08
05/07/2014	€230,663.65	€4,480.07	-€331,817.59

Market Operator Monthly Report

06/07/2014	€157,028.98	€3,082.29	-€311,006.38
07/07/2014	€349,983.04	-€19,684.18	-€367,069.24
08/07/2014	€648,535.51	-€9,533.23	-€366,319.74
09/07/2014	€480,400.86	€1,653.14	-€376,128.54
10/07/2014	€372,278.39	-€15,065.54	-€382,651.68
11/07/2014	€344,824.34	-€4,120.89	-€376,325.49
12/07/2014	€136,771.90	-€3,431.31	-€327,580.04
13/07/2014	€201,133.37	€6,137.62	-€307,581.16
14/07/2014	€153,757.97	€7,705.05	-€339,646.20
15/07/2014	€369,139.11	-€15,673.85	-€361,070.34
16/07/2014	€168,610.28	€3,847.17	-€361,468.94
17/07/2014	€209,677.62	-€8,375.49	-€376,557.76
18/07/2014	€300,548.99	-€23,516.12	-€366,989.74
19/07/2014	€83,088.47	-€3,674.51	-€345,018.63
20/07/2014	€447,093.33	-€17,991.86	-€323,054.54
21/07/2014	€322,037.33	-€12,039.17	-€372,830.00
22/07/2014	€83,770.61	€3,681.89	-€387,118.40
23/07/2014	€204,584.49	-€1,931.74	-€386,845.54
24/07/2014	€237,529.82	€4,124.77	-€387,470.89
25/07/2014	€335,890.74	-€13,483.89	-€380,964.94
26/07/2014	€246,314.53	€4,284.30	-€339,115.54
27/07/2014	€282,009.26	-€1,936.28	-€308,222.21
28/07/2014	€158,834.62	-€7,303.63	-€361,105.39
29/07/2014	€352,826.94	-€19,061.68	-€366,657.54
30/07/2014	€126,068.01	-€2,383.07	-€366,112.56
31/07/2014	€283,337.90	-€3,756.17	-€373,644.96
01/08/2014	€274,360.75	-€12,033.45	-€372,980.02
02/08/2014	€258,118.92	€4,893.50	-€327,949.98
03/08/2014	€327,040.90	€8,442.64	-€305,457.30
04/08/2014	€167,115.44	-€6,733.11	-€330,974.11
05/08/2014	€274,621.46	-€12,985.82	-€373,825.40
06/08/2014	€216,881.05	-€9,878.98	-€373,500.80
07/08/2014	€307,226.38	-€1,891.78	-€374,506.90
08/08/2014	€235,640.71	€672.95	-€367,387.52
09/08/2014	€201,641.79	€5,963.74	-€332,273.59
10/08/2014	€282,529.44	€5,921.25	-€312,786.06
11/08/2014	€375,549.84	€12,876.98	-€346,454.02
12/08/2014	€316,498.63	€7,662.02	-€365,270.42
13/08/2014	€249,885.09	€4,545.93	-€370,347.81
14/08/2014	€426,874.88	-€15,255.54	-€374,499.26
15/08/2014	€289,488.19	€78.03	-€369,512.95
16/08/2014	€303,833.71	€12,298.72	-€324,082.55
17/08/2014	€585,195.25	€6,128.79	-€299,215.76
18/08/2014	€305,925.65	-€183.47	-€354,775.23
19/08/2014	€97,795.36	-€7,672.07	-€374,889.12
20/08/2014	€464,644.88	-€16,070.06	-€382,405.91
21/08/2014	€251,980.11	€901.79	-€374,877.46
22/08/2014	€538,626.00	€4,694.69	-€374,542.51
23/08/2014	€179,253.95	-€5,928.60	-€343,834.10
24/08/2014	€298,618.37	€2,240.04	-€323,264.23

Market Operator Monthly Report

25/08/2014	€549,249.29	-€3,951.96	-€367,421.97
26/08/2014	€278,024.56	-€1,213.37	-€383,317.40
27/08/2014	€309,992.50	-€31,179.21	-€375,986.29
28/08/2014	€431,344.29	€42,127.14	-€372,404.90
29/08/2014	€533,760.55	-€28,910.34	-€364,130.20
30/08/2014	€266,051.80	-€3,826.06	-€341,353.68
31/08/2014	€316,000.98	-€4,472.78	-€331,718.96

Table 23 - Constraint Payments, Uninstructed Imbalance Payments, and Imperfections Charges

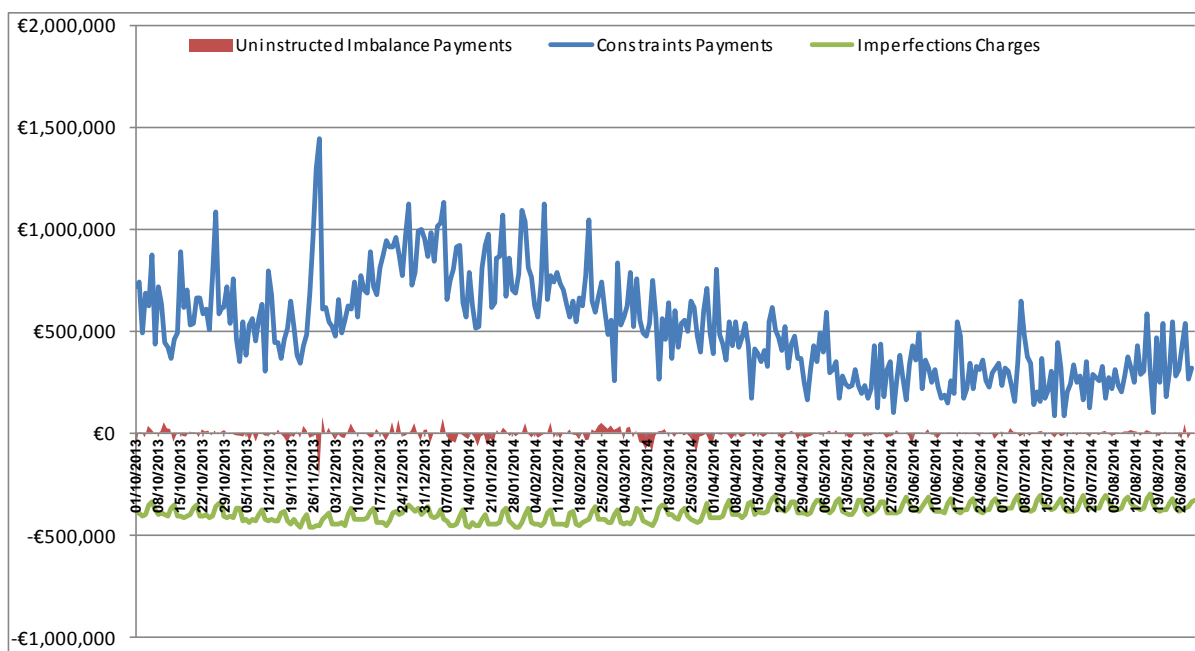


Figure 24 - Constraint Payments, Uninstructed Imbalance Payments, and Imperfections Charges

Week No	Make Whole Payments
39	€157,154.18
40	€100,559.86
41	€93,700.82
42	€34,755.70
43	€91,699.33
44	€48,763.34
45	€29,311.13
46	€51,580.95
47	€47,924.57
48	€18,836.02
49	€2,320.81
50	€50,370.62
51	€88,625.27
52	€80,442.97
1	€11,198.45
2	€3,215.89
3	€2,907.21
4	€45,212.77
5	€0.24
6	€0.21

Market Operator Monthly Report

7	€86,074.69
8	€65,438.76
9	€82,008.00
10	€58,736.16
11	€46,720.09
12	€154,971.87
13	€6,346.71
14	€17,151.75
15	€35,987.24
16	€101,005.68
17	€91,892.49
18	€54,274.01
19	€66,864.22
20	€77,322.61
21	€97,206.32
22	€215,071.80
23	€218,478.64
24	€269,996.77
25	€250,003.28
26	€294,555.17
27	€290,810.60
28	€186,206.55
29	€108,164.63
30	€196,259.40
31	€148,066.69
32	€116,569.71
33	€256,681.50
34	€41,555.04

Table 24 - Make Whole Payments

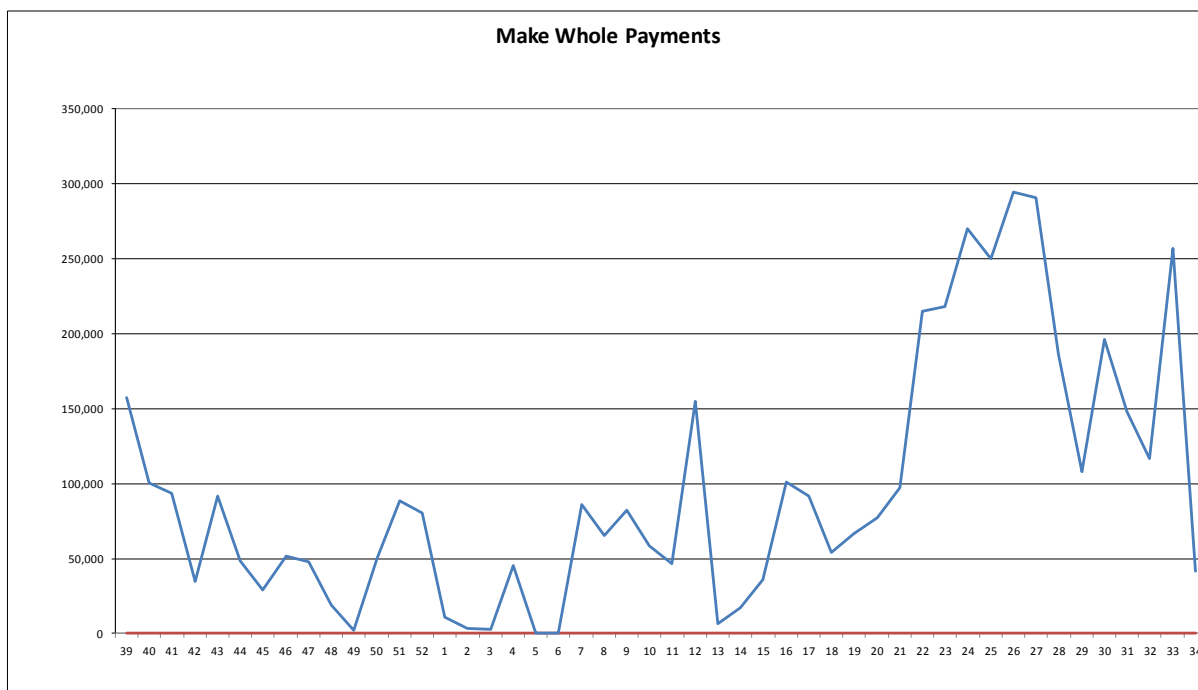


Figure 25 - Make Whole Payments

Week No	Testing Charges
39	€0.00
40	€0.00
41	€0.00
42	€0.00
43	€0.00
44	-€464.74
45	-€4,169.12
46	-€4,361.08
47	-€13,358.69
48	€0.00
49	-€983.42
50	€0.00
51	€0.00
52	€0.00
1	€0.00
2	€0.00
3	€6,382.50
4	€0.00
5	€0.00
6	€0.00
7	-€971.99
8	-€14,525.39
9	€0.00
10	-€10,047.37
11	€0.00
12	-€4,842.44
13	-€452.54
14	€0.00
15	€0.00
16	€0.00
17	-€6,369.87
18	-€42,879.16
19	-€55,135.72
20	€0.00
21	-€29,681.62
22	-€32,784.19
23	-€52,367.06
24	-€52,022.02
25	€0.00
26	€0.00
27	€0.00
28	€0.00
29	€0.00
30	€0.00
31	€0.00
32	-€32,737.93
33	€0.00
34	€0.00

Table 25 - Testing Charges

Market Operator Monthly Report

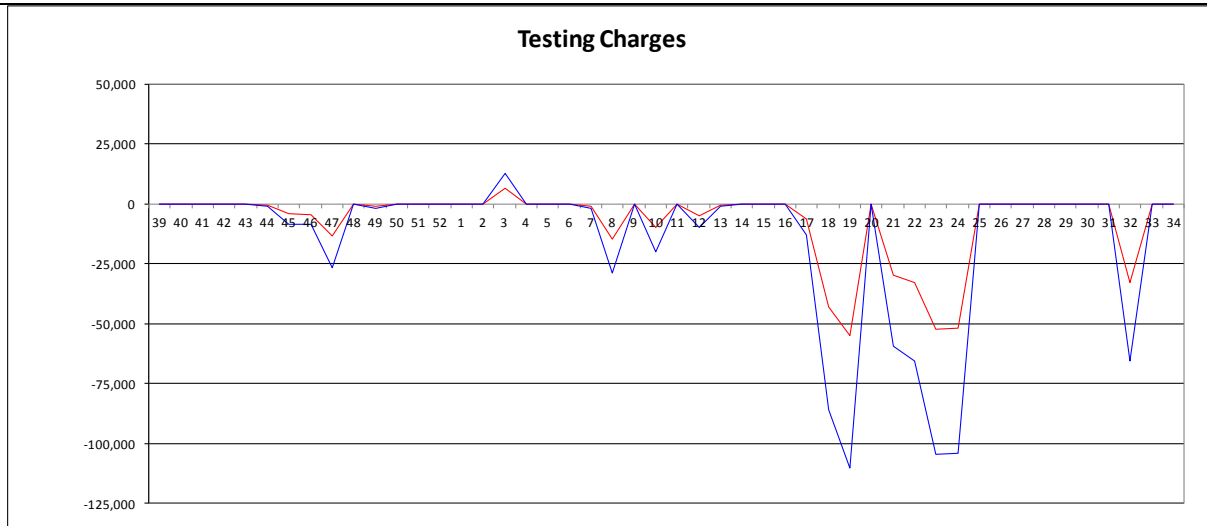


Figure 26 - Testing Charges

13 Appendix F: Default Commercial Offer Data Used

The table below lists for each unit the number of times in operations during August 2014 where the Commercial Offer Data was based on a Participant submission within the Market window, or based on Standing Data or Default Data submitted.

PNAME	RNAME	Manual	Adjusted	Standing	COUNT
PT_400116	DSU_401400			31	31
PT_400090	DSU_401270			2	2
PT_400090	DSU_401270	32			32
PT_400106	DSU_401330	43			43
PT_400101	DSU_401300	31			31
PT_400133	DSU_401530	20			20
PT_400021	GU_401640	9			9
PT_400024	GU_400120	31			31
PT_400024	GU_400121	31			31
PT_400026	GU_400140	32			32
PT_400030	GU_400180	47			47
PT_400030	GU_400181	47			47
PT_400030	GU_400182	47			47
PT_400030	GU_400183	46			46
PT_400030	GU_400200	41			41
PT_400030	GU_400201	41			41
PT_400030	GU_400202	38			38
PT_400030	GU_400203	38			38
PT_400030	GU_400210	38			38
PT_400030	GU_400211	38			38
PT_400030	GU_400220	39			39
PT_400030	GU_400221	38			38
PT_400030	GU_400240	38			38
PT_400030	GU_400250	38			38
PT_400030	GU_400251	38			38
PT_400030	GU_400252	38			38
PT_400030	GU_400260	38			38
PT_400030	GU_400270	38			38
PT_400030	GU_400271	40			40
PT_400030	GU_400272	42			42
PT_400030	GU_400280	38			38
PT_400030	GU_400281	38			38
PT_400030	GU_400290	38			38
PT_400030	GU_400300	47			47
PT_400030	GU_400311	47			47
PT_400030	GU_400323	47			47
PT_400030	GU_400360	37			37
PT_400030	GU_400361	38			38
PT_400030	GU_400362	38			38
PT_400030	GU_400363	38			38
PT_400030	GU_400370	38			38
PT_400030	GU_400850	47			47
PT_400032	GU_400430	31			31
PT_400034	GU_400940	31			31

Market Operator Monthly Report

PT_400034	GU_401090	31			31
PT_400034	GU_401440	31			31
PT_400035	GU_400480	56			56
PT_400037	GU_400500	31			31
PT_400041	GU_400530	53			53
PT_400044	GU_400540	56			56
PT_400050	GU_401290	16			16
PT_400054	GU_400620	31			31
PT_400055	GU_400630	31			31
PT_400064	GU_400750	31			31
PT_400064	GU_400751	31			31
PT_400064	GU_400752	31			31
PT_400064	GU_400753	31			31
PT_400064	GU_400754	31			31
PT_400064	GU_400760	31			31
PT_400064	GU_400761	31			31
PT_400064	GU_400762	31			31
PT_400064	GU_400770	31			31
PT_400064	GU_400771	31			31
PT_400064	GU_400780	31			31
PT_400064	GU_400781	31			31
PT_400075	GU_400930	77			77
PT_400077	GU_400950	31			31
PT_400078	GU_401010	31			31
PT_400078	GU_401011	31			31
PT_400087	GU_401230	7			7
PT_500024	GU_500040	41			41
PT_500024	GU_500041	31			31
PT_500027	GU_500130	85			85
PT_500027	GU_500131	85			85
PT_500027	GU_500140	85			85
PT_500040	GU_500280	31			31
PT_500040	GU_500281	31			31
PT_500040	GU_500282	31			31
PT_500040	GU_500283	31			31
PT_500040	GU_500284	31			31
PT_500045	GU_500820	31			31
PT_500045	GU_500821	31			31
PT_500045	GU_500822	31			31
PT_500045	GU_500823	31			31
PT_500045	GU_500824	31			31
PT_500045	GU_500825	31			31
PT_500048	GU_500904	51			51
PT_500050	GU_501040	31			31
PT_400034	GU_401090	31			31
PT_400034	GU_401440	31			31
PT_400035	GU_400480	56			56
PT_400037	GU_400500	31			31
PT_400041	GU_400530	53			53
PT_400044	GU_400540	56			56
PT_400050	GU_401290	16			16
PT_400054	GU_400620	31			31

Market Operator Monthly Report

PT_500050	GU_501050	31			31
PT_500050	GU_501150	31			31
PT_500050	GU_501190	31			31
PT_500053	GU_501130	31			31
PT_500066	GU_501210	31			31
PT_400021	GU_400021			31	31
PT_400021	GU_400050			31	31
PT_400021	GU_400060			31	31
PT_400021	GU_400070			31	31
PT_400021	GU_400080			31	31
PT_400021	GU_400591			31	31
PT_400021	GU_400600			31	31
PT_400021	GU_400910			31	31
PT_400021	GU_400920			31	31
PT_400021	GU_401080			31	31
PT_400021	GU_401380			31	31
PT_400021	GU_401600			31	31
PT_400021	GU_401640			23	23
PT_400025	GU_400130			31	31
PT_400030	GU_400310			31	31
PT_400038	GU_400550			31	31
PT_400050	GU_400650			31	31
PT_400050	GU_400660			31	31
PT_400050	GU_401000			31	31
PT_400050	GU_401060			31	31
PT_400050	GU_401150			31	31
PT_400050	GU_401240			31	31
PT_400050	GU_401250			31	31
PT_400050	GU_401290			16	16
PT_400062	GU_400730			31	31
PT_400062	GU_400731			31	31
PT_400062	GU_400840			31	31
PT_400062	GU_401310			31	31
PT_400062	GU_401550			31	31
PT_400062	GU_401551			31	31
PT_400062	GU_401560			31	31
PT_400062	GU_401570			31	31
PT_400062	GU_401580			31	31
PT_400082	GU_401100			31	31
PT_400087	GU_401230			24	24
PT_400123	GU_401470			8	8
PT_500021	GU_500010			31	31
PT_500021	GU_500740			31	31
PT_500021	GU_501160			31	31
PT_500050	GU_501050	31			31
PT_500050	GU_501150	31			31
PT_500050	GU_501190	31			31
PT_500053	GU_501130	31			31
PT_500066	GU_501210	31			31
PT_400021	GU_400021			31	31
PT_400021	GU_400050			31	31
PT_400021	GU_400060			31	31

Market Operator Monthly Report

PT_500032	GU_500211			31	31
PT_500032	GU_501120			31	31
PT_500039	GU_500270			31	31
PT_500044	GU_500720			31	31
PT_500047	GU_500790			31	31
PT_500061	GU_501170			31	31
PT_500062	GU_501180			31	31
PT_500074	GU_501250			31	31
PT_400021	I_ROIEWIC	32			32
PT_500021	I_NIMOYLE	31			31
PT_500075	I_NIMOYLE	4			4
PT_500024	I_NIMOYLE	3			3
PT_500031	I_NIMOYLE	31			31
PT_500069	I_NIMOYLE	9			9
PT_500058	I_NIMOYLE	3			3
PT_400096	I_ROIEWIC	89			89
PT_500037	I_NIMOYLE	31			31
PT_400113	I_ROIEWIC	31			31
PT_400115	I_ROIEWIC	31			31
PT_400136	I_ROIEWIC	53			53
PT_400108	I_ROIEWIC	58			58
PT_500070	I_NIMOYLE	5			5
PT_400030	I_ROIEWIC	58			58
PT_400099	I_ROIEWIC	31			31
Total		3880	0	1437	5317
Percentage		72.97%	0.00%	27.03%	100%

Table 26 - Default Commercial Data Used

14 Appendix G: Total Charges and Payments Data

The tables below list historical values for Total Charges and Total Payments in the SEM by month and currency since start of the SEM.

- Month of inclusion based on invoice date.
- Amounts are after application of Settlement Reallocation.

Market		Energy	Capacity	Market Operator	M+4 Energy	M+4 Capacity	M+4 Market Operator	M+13 Energy	M+13 Capacity	M+13 Market Operator	Ad-hoc Energy	Ad-hoc Capacity	Ad-hoc Market Operator	Total
Jul-13	ROI	£62,352,631.32	£18,204,333.81	£1,583,236.61	£975,631.58	£172,502.45	£7,848.20	£63,562.31	£16,373.37	£690.66	£904,389.43	£100,791.99	£0.00	84,381,991.73
	NI	£23,916,092.51	£6,533,901.21	£432,681.38	£92,026.95	£16,773.81	£694.39	£14,400.35	£3,081.82	£130.14	£204,040.13	£152.19	£0.00	31,213,974.88
Aug-13	ROI	£56,496,937.96	£18,035,531.87	£1,912,592.26	£627,109.44	£97,756.86	£9,727.88	£15,214,588.11	£12,273.00	£808.64	£0.00	£0.00	£0.00	92,407,326.02
	NI	£27,126,182.07	£5,775,203.97	£544,995.28	£40,928.60	£52,444.19	£3,674.11	£6,235,909.64	£5,483.53	£223.46	£0.00	£0.00	£0.00	39,785,044.85
Sep-13	ROI	£55,820,919.05	£17,453,995.09	£1,590,840.77	£871,046.03	£104,726.26	£5,239.42	£999,727.04	£165,703.71	£11,019.16	£0.00	£324,142.04	£0.00	77,347,358.57
	NI	£24,090,106.60	£5,421,565.87	£449,859.41	£232,772.49	£25,268.64	£1,265.21	£119,141.06	£13,356.37	£112.60	£0.00	£78,558.74	£0.00	30,432,006.99
Oct-13	ROI	£63,823,874.40	£19,230,805.66	£1,459,680.53	£665,669.95	£112,389.91	£4,962.50	£1,056,400.80	£25,936.14	£883.81	£1,141,610.70	£0.00	£0.00	87,522,214.40
	NI	£25,790,053.14	£5,439,039.21	£415,013.56	£77,362.24	£11,759.56	£437.51	£286,637.75	£5,978.86	£356.54	£375,245.80	£0.00	£0.00	32,401,884.17
Nov-13	ROI	£94,237,410.27	£26,111,830.04	£1,768,924.89	£1,095,479.88	£186,255.41	£10,667.03	£1,203,541.15	£58,436.00	£1,881.53	£2,162,845.35	£0.00	£0.00	126,837,271.55
	NI	£40,120,956.32	£9,383,627.04	£512,345.05	£79,171.25	£13,455.28	£753.82	£304,333.70	£18,778.73	£614.32	£591,913.98	£0.00	£0.00	51,025,949.49
Dec-13	ROI	£59,731,699.86	£27,064,400.43	£1,135,385.04	£777,997.00	£175,711.33	£8,515.85	£874,795.89	£44,746.05	£1,825.43	£0.00	£0.00	£0.00	90,615,076.88
	NI	£26,108,999.75	£9,220,782.35	£325,646.22	£58,193.58	£77,917.35	£571.58	£137,253.25	£14,599.87	£487.47	£0.00	£0.00	£0.00	35,944,451.42
Jan-14	ROI	£114,421,340.65	£24,793,160.86	£2,129,762.27	£798,055.27	£127,352.61	£7,984.34	£204,139.96	£36,418.59	£1,561.86	£473,584.35	£0.00	£0.00	142,993,360.76
	NI	£51,824,850.54	£9,142,377.84	£617,870.56	£62,006.75	£10,003.11	£595.49	£67,335.86	£14,491.45	£574.85	£141,821.26	£0.00	£0.00	61,881,927.71
Feb-14	ROI	£66,102,607.16	£27,393,747.26	£1,496,376.58	£305,733.65	£76,911.71	£2,819.89	£479,013.35	£22,451.87	£9,128.65	£381,194.91	£0.00	£0.00	96,269,985.03
	NI	£31,130,342.59	£9,846,758.26	£422,869.99	£25,720.60	£3,900.39	£240.37	£187,918.65	£15,303.03	£942.92	£235.51	£0.00	£0.00	41,634,232.31
Mar-14	ROI	£70,041,213.49	£26,285,336.21	£1,449,159.95	£261,906.17	£61,216.38	£2,226.19	£92,283.95	£30,407.22	£960.16	£0.00	£0.00	£0.00	98,224,709.72
	NI	£30,175,818.70	£9,293,564.48	£406,620.40	£46,940.79	£7,639.04	£408.77	£52,408.32	£11,933.67	£470.83	£0.00	£0.00	£0.00	39,995,805.00
Apr-14	ROI	£62,098,778.40	£21,155,742.39	£1,388,175.41	£528,104.58	£142,466.39	£4,901.73	£242,053.48	£38,030.86	£1,783.00	£0.00	£0.00	£0.00	85,600,036.24
	NI	£26,448,426.91	£9,644,850.74	£386,840.18	£307,948.88	£77,962.26	£2,649.15	£53,805.05	£9,613.13	£381.03	£0.00	£0.00	£0.00	36,932,477.33
May-14	ROI	£68,945,192.38	£22,029,381.87	£1,615,436.17	£629,905.18	£213,410.99	£7,659.07	£192,421.65	£21,030.53	£1,110.05	£429,407.30	£0.00	£0.00	94,084,955.19
	NI	£28,649,957.73	£7,313,397.03	£439,831.96	£149,812.37	£34,908.87	£997.82	£58,386.93	£9,959.93	£468.77	£0.03	£0.00	£0.00	36,657,721.44
Jun-14	ROI	£52,841,750.77	£17,596,854.80	£1,312,068.35	£423,771.26	£115,750.72	£4,162.65	£89,169.46	£18,685.28	£1,014.73	£28,526.30	£0.00	£0.00	72,431,754.32
	NI	£21,944,762.06	£6,361,219.34	£345,120.63	£120,971.43	£44,784.33	£1,003.03	£41,125.48	£9,461.42	£415.67	£2,532.18	£0.00	£0.00	28,871,395.57
Jul-14	ROI	£48,255,770.91	£22,988,780.17	£1,292,701.68	£332,606.61	£88,357.34	£2,943.28	£85,242.72	£17,526.18	£1,047.39	£0.00	£0.00	£0.00	73,064,976.28
	NI	£16,832,807.07	£5,122,118.14	£325,108.62	£91,338.63	£25,719.39	£870.76	£34,166.04	£7,520.83	£436.14	£0.00	£0.00	£0.00	22,440,085.62
Aug-14	ROI	£75,858,678.54	£17,424,467.63	£1,576,396.05	£255,748.90	£41,217.98	£1,835.23	£112,980.92	£0.00	£1,327.55	£123,147.19	£0.00	£0.00	95,395,799.99
	NI	£20,792,697.59	£5,164,101.59	£404,571.34	£73,223.02	£16,729.14	£695.03	£40,446.87	£0.00	£491.99	£10.52	£0.00	£0.00	26,492,967.09

Table 27 - Total Charges by Month

Market Operator Monthly Report

Market		Energy	Capacity	M+4 Energy	M+4 Capacity	M+4 Market Operator	M+13 Energy	M+13 Capacity	M+13 Market Operator	Ad-hoc Energy	Ad-hoc Capacity	Ad-hoc Market Operator	Total
Jul-13	ROI	€64,373,421.59	€18,247,432.96	€964,041.86	€173,902.58	€7,906.35	€55,507.11	€17,916.41	€690.80	€924,828.19	€100,969.43	€0.00	€84,866,617.28
	NI	€24,434,329.71	€6,507,406.51	€94,802.99	€15,679.58	€710.78	€12,978.92	€1,777.48	€130.12	€206,821.52	€0.00	€0.00	€31,274,637.61
Aug-13	ROI	€63,981,400.27	€17,490,496.02	€574,908.31	€103,763.23	€10,083.25	€16,006,162.20	€10,709.76	€808.95	€986.69	€0.00	€0.00	€98,179,318.68
	NI	€23,798,215.28	€6,256,493.76	€56,417.87	€47,293.31	€2,768.68	€5,757,671.12	€6,849.67	€223.45	€18,449.41	€0.00	€0.00	€35,944,382.55
Sep-13	ROI	€62,051,092.84	€16,936,760.25	€1,068,679.90	€128,081.30	€7,144.86	€971,541.05	€151,818.04	€11,020.17	€0.00	€416,852.38	€0.00	€81,742,990.79
	NI	€21,229,997.89	€5,817,250.40	€156,880.27	€5,515.98	€108.46	€19,000.09	€25,023.77	€112.65	€0.00	€92.64	€0.00	€27,253,982.15
Oct-13	ROI	€70,147,828.86	€18,147,894.98	€704,498.56	€112,615.82	€6,476.59	€907,795.23	€25,996.67	€883.97	€1,040,063.76	€0.00	€0.00	€91,094,054.44
	NI	€24,161,387.51	€6,338,740.34	€71,964.41	€11,643.56	€445.89	€216,015.53	€5,767.60	€356.54	€303,081.27	€0.00	€0.00	€31,109,402.65
Nov-13	ROI	€101,727,467.69	€26,117,243.83	€1,224,763.25	€189,998.42	€12,263.50	€1,215,831.35	€57,206.41	€1,470.22	€2,187,635.43	€0.00	€0.00	€132,733,880.10
	NI	€38,593,632.08	€9,396,822.98	€111,667.01	€10,330.33	€754.66	€405,512.07	€19,818.44	€503.29	€523,998.04	€0.00	€0.00	€49,063,038.90
Dec-13	ROI	€65,016,104.57	€28,265,983.93	€814,481.63	€237,772.30	€8,560.54	€742,019.49	€45,101.88	€1,753.62	€0.00	€0.00	€0.00	€95,131,777.96
	NI	€26,883,033.60	€8,854,167.97	€62,225.77	€25,458.47	€563.46	€254,389.50	€14,183.48	€467.80	€0.00	€0.00	€0.00	€36,094,490.05
Jan-14	ROI	€134,009,133.84	€29,642,517.67	€793,440.19	€126,432.23	€7,824.65	€221,578.57	€36,894.00	€1,646.36	€479,971.01	€0.00	€0.00	€159,319,438.52
	NI	€51,714,479.92	€10,157,332.65	€82,843.03	€10,154.76	€543.56	€66,035.81	€14,046.97	€605.11	€109,684.36	€0.00	€0.00	€62,155,726.17
Feb-14	ROI	€78,679,881.12	€26,819,095.36	€304,687.52	€76,805.50	€2,536.46	€531,739.65	€29,343.21	€10,349.43	€443,421.38	€0.00	€0.00	€106,897,859.63
	NI	€29,747,186.53	€10,347,544.45	€37,918.21	€4,082.15	€214.26	€179,315.25	€9,737.45	€350.80	€3.55	€0.00	€0.00	€40,326,352.65
Mar-14	ROI	€75,149,006.14	€26,180,620.54	€259,644.98	€60,397.08	€2,170.67	€127,303.70	€28,200.28	€960.40	€0.00	€0.00	€0.00	€101,808,303.79
	NI	€29,749,446.42	€9,292,032.85	€46,950.40	€8,326.93	€408.65	€52,017.29	€13,760.80	€471.08	€0.00	€0.00	€0.00	€39,163,414.42
Apr-14	ROI	€65,482,679.64	€21,981,963.17	€549,302.08	€147,627.43	€4,399.40	€259,726.57	€38,566.49	€1,783.33	€0.00	€0.00	€0.00	€88,466,048.11
	NI	€25,517,456.45	€8,979,409.88	€303,950.50	€73,719.22	€2,138.60	€56,294.66	€9,188.57	€381.08	€0.00	€0.00	€0.00	€34,942,538.96
May-14	ROI	€68,502,489.93	€22,405,052.21	€652,683.44	€210,307.65	€7,807.32	€249,029.58	€16,425.79	€1,110.17	€9,581.32	€0.00	€0.00	€92,054,487.41
	NI	€27,515,054.00	€7,036,489.15	€150,145.26	€37,452.65	€999.79	€81,713.52	€13,718.04	€468.77	€3.89	€0.00	€0.00	€34,836,045.07
Jun-14	ROI	€53,863,542.49	€16,268,861.66	€424,333.36	€121,415.36	€4,245.54	€106,227.35	€17,318.53	€1,014.63	€10,805.33	€0.00	€0.00	€70,817,764.25
	NI	€18,301,490.12	€7,464,864.99	€121,134.45	€40,186.30	€1,005.32	€50,770.87	€10,564.39	€415.66	€29.76	€0.00	€0.00	€25,990,461.86
Jul-14	ROI	€50,929,138.15	€21,772,067.06	€326,631.36	€82,858.43	€2,938.18	€123,130.56	€17,118.42	€1,016.51	€0.00	€0.00	€0.00	€73,254,898.67
	NI	€12,936,147.70	€6,035,816.09	€91,479.13	€29,875.87	€813.16	€67,310.27	€7,807.37	€427.29	€0.00	€0.00	€0.00	€19,169,676.88
Aug-14	ROI	€76,295,371.52	€16,503,906.00	€283,973.76	€42,797.07	€2,738.01	€125,676.42	€0.00	€1,327.83	€29.36	€0.00	€0.00	€93,255,819.97
	NI	€17,954,420.41	€5,911,052.65	€74,371.07	€15,553.63	€863.74	€54,424.97	€0.00	€488.54	€7.43	€0.00	€0.00	€24,011,182.44

Table 28 - Total Payments by Month

15 Appendix H: Full Balancing Costs

Historical figures for full Balancing Costs of both the Trading and Capacity Markets, for the current financial year (October to September), are provided below. Information related to periods before this is available in previous Monthly Market Operator Reports.

- Positive values indicate Payments were greater than Charges.
- Negative values indicate Charges were greater than Payments.

Trading Market

Date Of Invoice	Week No	SEM Balancing Costs	VAT Balancing Costs
04/10/2013	38	-€674,643.65	-€7,304.11
11/10/2013	39	€1,470,454.75	€282,967.81
18/10/2013	40	€1,565,540.72	€261,420.05
25/10/2013	41	€1,216,501.47	-€203,049.68
01/11/2013	42	€1,582,640.50	€227,924.39
08/11/2013	43	€2,175,993.38	€368,919.09
15/11/2013	44	€234,229.47	€89,641.72
22/11/2013	45	€893,912.83	€182,707.89
29/11/2013	46	€112,506.60	€1,606.89
06/12/2013	47	€2,647,032.97	€215,777.46
13/12/2013	48	€752,640.18	€133,576.36
20/12/2013	49	€1,841,603.06	€263,539.44
03/01/2014	50	€2,846,523.20	€390,127.91
03/01/2014	51	€3,745,323.83	€500,276.98
10/01/2014	52	€3,597,778.03	€450,932.98
17/01/2014	1	€3,228,601.37	€473,806.13
24/01/2014	2	€1,326,598.20	€473,806.13
31/01/2014	3	€2,554,714.89	€273,646.36
07/02/2014	4	€2,844,930.59	€413,677.68
14/02/2014	5	€2,595,824.97	€344,267.69
21/02/2014	6	€2,011,856.07	€289,132.53
28/02/2014	7	€1,795,332.18	€260,445.50
07/03/2014	8	€1,243,165.04	€640,903.32
14/03/2014	9	€842,764.84	€498,771.98
21/03/2014	10	€566,483.84	€51,979.84
28/03/2014	11	€604,404.46	€287,653.95
04/04/2014	12	€1,005,736.03	€ 304,802.51
11/04/2014	13	€508,440.18	€ 423,038.98
18/04/2014	14	-€217,860.87	€ 56,687.76
25/04/2014	15	€843,391.20	-€ 37,846.05
02/05/2014	16	-€420,682.47	€188,369.50
09/05/2014	17	€347,401.87	-€241,641.43
16/05/2014	18	-€886,208.32	€41,357.12
23/05/2014	19	-€1,046,996.68	-€292,108.29
30/05/2014	20	-€686,867.47	-€79,044.71
06/06/2014	21	-€326,019.47	-€82,173.40
13/06/2014	22	-€802,412.50	-€18,940.35
20/06/2014	23	-€566,638.49	-€51,931.44
27/06/2014	24	-€559,663.83	-€346,567.51
04/07/2014	25	-€559,663.83	-€77,985.84
11/07/2014	26	-€486,978.50	€30,288.10

Market Operator Monthly Report

Date Of Invoice	Week No	SEM Balancing Costs	VAT Balancing Costs
18/07/2014	27	-€64,357.82	€33,032.13
25/07/2014	28	-€1,005,927.10	-€40,984.50
01/08/2014	29	-€733,534.70	€87,761.77
08/08/2014	30	-€782,697.01	€42,298.74
15/08/2014	31	-€744,168.26	€49,090.55
22/08/2014	32	-€190,165.89	€ 8,449.19
29/08/2014	33	-€99,247.82	-€35,603.87

Table 29 – Full Balancing Costs for Trading Charges and Payments

Note: SEM Balancing Costs are provided based on daily exchange rates; VAT Balancing Costs are based on the Invoicing Date Trading Day exchange rate. VAT Balancing costs exclude Currency Cost related VAT.

Capacity Market

Invoice Month	SEM Balancing Costs	VAT Balancing Costs
October 2013	-€304.76	-€94.05
November 2013	-€372.56	€2,045.28
December 2013	-€394.40	€-454.73
January 2014	-€424.40	-€1,164.62
February 2014	-€330.78	-€1,955.12
March 2014	-€332.7	€5,757.11
April 2014	-€294.96	-€3,446.68
May 2014	-€278.55	€1,776.78
June 2014	-€238.78	€973.06
July 2014	€-237.70	-€233.18
August 2014	€-236.85	€95.72

Table 30 - Balancing Costs for Capacity Settlement

Note: SEM Capacity Balancing Costs and VAT Balancing Costs are provided based on Annual Capacity exchange rate. VAT Balancing costs exclude Currency Cost related VAT.

16 Appendix I: MSP Algorithms

The Market Operator has two different certified solvers used to determine Unit Commitment. These solvers use the Lagrangian Relaxation (LR) and Mixed Integer Programming (MIP) methodologies.

The primary algorithm used in the SEM is Lagrangian Relaxation (LR). Under certain schedule outcomes this solution is compared to results achieved using MIP. The SEMO policy on the use of MIP has been updated and is available from the SEMO website [here](#).

Historical information on runs and dates where the MIP algorithm has been used for published results is provided below.

Month	Ex-Ante	Ex-Ante 2	Ex-Post Indicative	Ex-Post Initial	Within Day
May 2013	-	-	-	-	-
June 2013	-	18/06/2013	-	-	-
July 2013	-	-	-	25/07/2013	16/07/2013
August 2013	-	13/08/2013	14/08/2013	-	05/08/2013
September 2013	-	24/09/2013	05/09/2013	12/09/2013	03/09/2013 30/09/2013
October 2013	-	-	30/10/2013	07/10/2013, 24/10/2013 & 30/10/2013	-
November 2013	-	-	14/11/2013 20/11/2013	14/11/2013	17/11/2013 30/11/2013
December 2013	02/12/2013 03/12/2013	02/12/2013	02/12/2013 21/12/2013	-	19/12/2013

Market Operator Monthly Report

Month	Ex-Ante	Ex-Ante 2	Ex-Post Indicative	Ex-Post Initial	Within Day
January 2014	07/01/2014	-	05/01/2014 19/01/2014	04/01/2014 19/01/2014 21/01/2014	-
February 2014	26/02/2014	-	-	-	-
March 2014	-	26/03/2014 27/03/2014	15/03/2014 27/03/2014	22/03/2014	13/03/2014
April 2014	-	11/04/2014	-	07/04/2014	
May 2014	-	-	-	-	26/05/2014
June 2014	17/06/2014	-	18/06/2014 29/06/2014	-	25/06/2014 26/06/2014
July 2014	-	-	-	02/07/2014 03/07/2014 11/07/2014	-
August 2014		13/08/2014 14/08/2014 22/08/2014	14/08/2014	27/08/2014	11/08/2014 13/08/2014

Table 29 - MIP Algorithms

Operational Date	Trade Date	Run Type	LR Peak SMP	MIP Peak SMP	Published
04/03/2013	05/03/2013	EA1	€586.55	€301.78	MIP
11/03/2013	11/03/2013	WD1	€629.46	€333.37	MIP
11/03/2013	12/03/2013	EA2	€561.28	€221.27	MIP
12/03/2013	11/03/2013	EP1	€1,350.64	€699.49	MIP
15/03/2013	11/03/2013	EP2	€1,350.64	€699.49	MIP
17/03/2013	18/03/2013	EA1	€576.04	€346.00	MIP
18/03/2013	19/03/2013	EA2	€682.41	€346.00	MIP
19/03/2013	18/03/2013	EP1	€576.04	€372.23	MIP
20/03/2013	24/03/2013	EP2	€625.32	€168.48	MIP
21/03/2013	21/03/2013	WD1	€596.97	€259.45	MIP
27/03/2013	26/03/2013	EP1	€508.83	€265.65	MIP
30/03/2013	30/03/2013	WD1	€556.86	€396.00	MIP
30/03/2013	29/03/2013	EP1	€732.81	€414.64	MIP

Market Operator Monthly Report

30/03/2013	26/03/2013	EP2	€509.19	€265.65	MIP
09/04/2013	09/04/2013	WD1	€710.75	€123.59	MIP
29/04/2013	29/04/2013	WD1	€1000.00	€168.92	MIP
17/06/2013	18/06/2013	EA2	€576.24	€84.08	MIP
16/07/2013	16/07/2013	WD1	583.17	48.11	MIP
29/07/2013	25/07/2013	EP2	€591.29	€97.59	MIP
05/08/2013	05/08/2013	WD1	€1,000	€47.02	MIP
12/08/2013	13/08/2013	EA2	€591.14	€91.37	MIP
15/08/2013	14/08/2013	EP1	€590.51	€79.91	MIP
03/09/2013	03/09/2013	WD1	€591.42	€96.56	MIP
06/09/2013	05/09/2013	EP1	€598.70	€116.29	MIP
16/09/2013	12/09/2013	EP2	€1000.00	€313.90	MIP
23/09/2013	24/09/2013	EA2	€609.58	€98.56	MIP
30/09/2013	30/09/2013	WD1	-€100.00	€31.47	MIP
11/10/2013	07/10/2013	EP2	€1000.00	€77.71	MIP
28/10/2013	24/10/2013	EP2	€517.40	€517.40	MIP
31/10/2013	30/10/2013	EP1	€596.88	€363.43	MIP
03/11/2013	30/10/2013	EP2	€596.88	€363.43	MIP
15/11/2013	14/11/2013	EP1	€555.85	€511.00	MIP
18/11/2013	14/11/2013	EP2	€679.09	€511.00	MIP
17/11/2013	17/11/2013	WD1	€638.64	€572.75	MIP
21/11/2013	20/11/2013	EP1	€ -100.00	€268.28	MIP
30/11/2013	30/11/2013	WD1	€568.78	€283.21	MIP
01/12/2013	02/12/2013	EA1	€569.78	€264.13	MIP
01/12/2013	02/12/2013	EA2	€569.78	€265.85	MIP
02/12/2013	02/12/2013	WD1	€651.62	€243.25	MIP
02/12/2013	03/12/2013	EA1	€1000.00	€311.25	MIP
21/12/2013	21/12/2013	WD1	€637.14	€308.15	MIP
23/12/2013	19/12/2013	EP2	€633.99	€371.89	MIP
08/01/2014	04/01/2014	EP2	€683.07	€550.00	MIP
06/01/2014	05/01/2014	EP1	€683.07	€550.86	MIP
06/01/2014	07/01/2014	EA1	€609.67	€238.04	MIP
20/01/2014	19/01/2014	EP1	€678.86	€592.00	MIP
23/01/2014	19/01/2014	EP2	€678.86	€592.00	MIP
25/01/2014	21/01/2014	EP2	€683.13	€405.24	MIP
26/02/2014	27/02/2014	EA1	€567.34	€172.40	MIP
13/03/2014	09/03/2014	EP2	€1000.00	€359.19	MIP
15/03/2014	15/03/2014	WD1	€1166.98	€101.84	MIP
22/03/2014	21/03/2014	EP1	€583.98	€337.87	MIP
26/03/2014	27/03/2014	EA2	€1000.00	€337.87	MIP
27/03/2014	27/03/2014	WD1	€1000.00	€486.54	MIP
27/03/2014	28/03/2014	EA2	€1000.00	€179.49	MIP
10/04/2014	11/04/2014	EA2	€539.67	€143.88	MIP
03/04/2014	07/04/2014	EP2	€573.67	€670.25	MIP
26/05/2014	26/05/2014	WD1	€578.28	€301.71	MIP
16/06/2014	17/06/2014	EA1	€562.05	€534.28	MIP
19/06/2014	18/06/2014	EP1	€551.50	€526.61	MIP
30/06/2014	29/06/2014	EP1	€1,000	€956.83	MIP
25/06/2014	25/06/2014	WD1	€930.72	€57.32	MIP
26/06/2014	26/06/2014	WD1	€1,000	€69.50	MIP
02/07/2014	28/06/2014	EP2	€1,000	€338.00	MIP
03/07/2014	29/06/2014	EP2	€1,000	€955.38	MIP
11/07/2014	07/07/2014	EP2	€1,000	€288.48	MIP
11/08/2014	11/08/2014	WD1	€1,000	€68.49	MIP

Market Operator Monthly Report

12/08/2014	13/08/2014	EA2	€1,000	€56.21	MIP
13/08/2014	13/08/2014	WD1	€1,000	€114.89	MIP
13/08/2014	14/08/2014	EA2	€1,000	€377.59	MIP
15/08/2014	14/08/2014	EP1	€1,000	€113.79	MIP
21/08/2014	22/08/2014	EA2	€1,000	€114.35	MIP
31/08/2014	27/08/2014	EP2	-€100	€52.30	MIP

Table 31 - MIP Vs LR Peak Price Comparison